

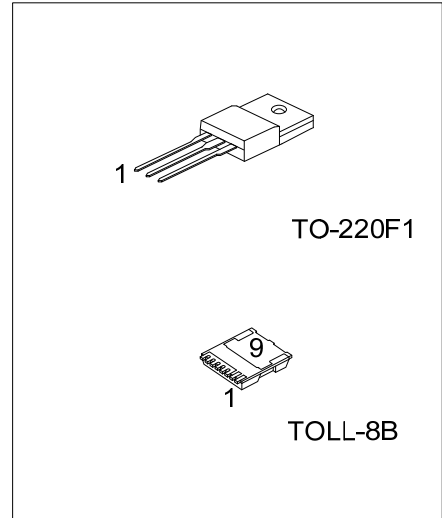


**38NM60S-U3**

Preliminary

*Power MOSFET*

**38A, 600V N-CHANNEL  
FAST-SPEED  
SUPER-JUNCTION MOSFET**



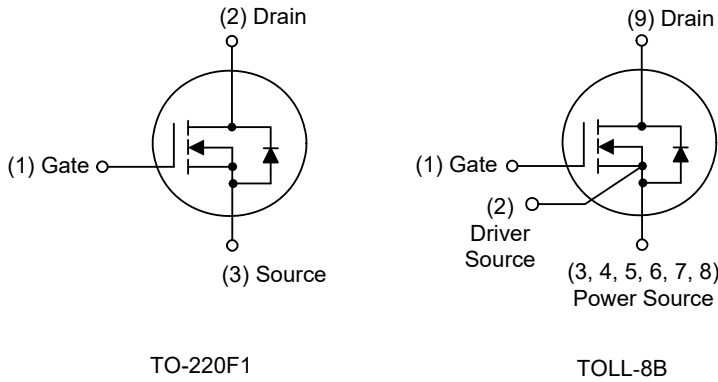
■ DESCRIPTION

The **UTC 38NM60S-U3** is a fast-speed switching products, Super Junction MOSFET Structure and is designed to have better characteristics, such as fast switching time, low gate charge, low on-state resistance and a high rugged avalanche characteristics. This power MOSFET is usually used at AC-DC converters for power applications.

■ FEATURES

- \*  $R_{DS(ON)} \leq 110 \text{ m}\Omega @ V_{GS}=10V, I_D=15A$
- \* Fast switching capability
- \* Avalanche energy tested
- \* Low on-resistance
- \* Improved dv/dt capability, high ruggedness

■ SYMBOL



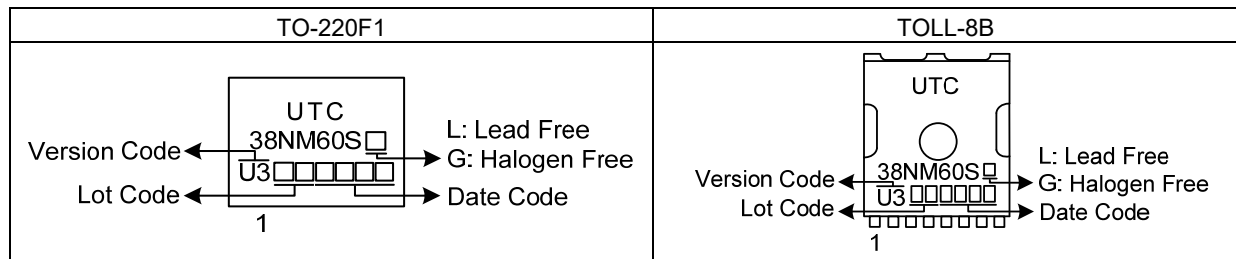
■ ORDERING INFORMATION

Ordering Number		Package	Pin Assignment							Packing		
Lead Free	Halogen Free		1	2	3	4	5	6	7		8	9
38NM60SL-U3-TF1-T	38NM60SG-U3-TF1-T	TO-220F1	G	D	S	-	-	-	-	-	-	Tube
38NM60SL-U3-T8B-R	38NM60SG-U3-T8B-R	TOLL-8B	G	S	S	S	S	S	S	S	D	Tape Reel

Note: Pin Assignment: G: Gate D: Drain S: Source

<p>38NM60SG-U3-TF1-T</p> <p>(1)Packing Type (2)Package Type (3)Version Code (4)Green Package</p>	<p>(1) T: Tube, R: Tape Reel (2) TF1: TO-220F1, T8B: TOLL-8B (3) Version U3 (4) G: Halogen Free and Lead Free, L: Lead Free</p>
--	---

■ MARKING



■ ABSOLUTE MAXIMUM RATINGS ( $T_C=25^\circ\text{C}$ , unless otherwise specified)

PARAMETER		SYMBOL	RATINGS	UNIT
Drain-Source Voltage		$V_{DSS}$	600	V
Gate-Source Voltage		$V_{GSS}$	$\pm 30$	V
Drain Current	Continuous	$I_D$	38	A
	Pulsed (Note 2)	$I_{DM}$	114	A
Avalanche Energy	Single Pulsed (Note 3)	$E_{AS}$	2050	mJ
Peak Diode Recovery dv/dt (Note 4)		dv/dt	8	V/ns
Power Dissipation	TO-220F1	$P_D$	40	W
	TOLL-8B		220	W
Junction Temperature		$T_J$	+150	$^\circ\text{C}$
Storage Temperature		$T_{STG}$	-55 ~ +150	$^\circ\text{C}$

Notes: 1. Absolute maximum ratings are those values beyond which the device could be permanently damaged.

Absolute maximum ratings are stress ratings only and functional device operation is not implied.

2. Repetitive Rating: Pulse width limited by maximum junction temperature.

3.  $L = 100\text{mH}$ ,  $I_{AS} = 6.4\text{A}$ ,  $V_{DD} = 90\text{V}$ ,  $R_G = 25\Omega$ , Starting  $T_J = 25^\circ\text{C}$

4.  $I_{SD} \leq 30\text{A}$ ,  $di/dt \leq 200\text{A}/\mu\text{s}$ ,  $V_{DD} \leq BV_{DSS}$ , Starting  $T_J = 25^\circ\text{C}$

■ THERMAL DATA

PARAMETER		SYMBOL	RATING	UNIT
Junction to Ambient	TO-220F1	$\theta_{JA}$	62.5	$^\circ\text{C}/\text{W}$
	TOLL-8B		35 (Note)	$^\circ\text{C}/\text{W}$
Junction to Case	TO-220F1	$\theta_{JC}$	3.125	$^\circ\text{C}/\text{W}$
	TOLL-8B		0.57 (Note)	$^\circ\text{C}/\text{W}$

Note: Device mounted on FR-4 substrate  $P_c$  board, 2oz copper, with 1inch square copper plate.

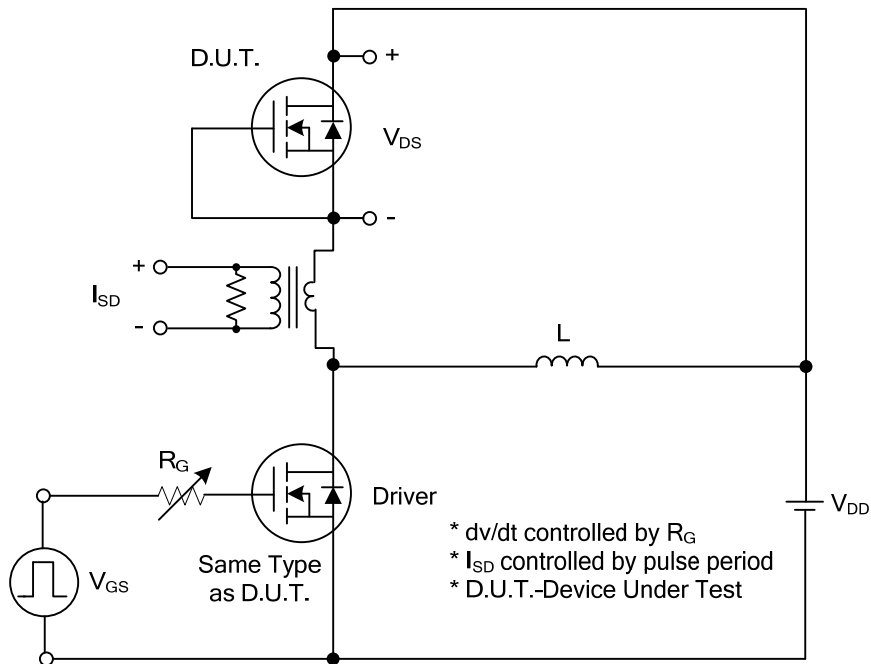
■ ELECTRICAL CHARACTERISTICS (T<sub>J</sub>=25°C, unless otherwise specified)

PARAMETER	SYMBOL	TEST CONDITIONS	MIN	TYP	MAX	UNIT
<b>OFF CHARACTERISTICS</b>						
Drain-Source Breakdown Voltage	BV <sub>DSS</sub>	V <sub>GS</sub> =0V, I <sub>D</sub> =250μA	600			V
Drain-Source Leakage Current	I <sub>DSS</sub>	V <sub>DS</sub> =600V, V <sub>GS</sub> =0V			10	μA
Gate-Source Leakage Current	I <sub>GSS</sub>	V <sub>GS</sub> =±30V, V <sub>DS</sub> =0V			±100	nA
<b>ON CHARACTERISTICS</b>						
Gate Threshold Voltage	V <sub>GS(TH)</sub>	V <sub>DS</sub> =V <sub>GS</sub> , I <sub>D</sub> =250μA	2.5		4.5	V
Static Drain-Source On-State Resistance	R <sub>DS(ON)</sub>	V <sub>GS</sub> =10V, I <sub>D</sub> =15A			110	mΩ
<b>DYNAMIC CHARACTERISTICS</b>						
Input Capacitance	C <sub>ISS</sub>	V <sub>GS</sub> =0V, V <sub>DS</sub> =50V, f=1MHz		2090		pF
Output Capacitance	C <sub>OSS</sub>			693		pF
Reverse Transfer Capacitance	C <sub>RSS</sub>			8		pF
<b>SWITCHING CHARACTERISTICS</b>						
Total Gate Charge	Q <sub>G</sub>	V <sub>DS</sub> =480V, V <sub>GS</sub> =10V, I <sub>D</sub> =9.5A (Note 1, 2)		50		nC
Gate-Source Charge	Q <sub>GS</sub>			14		nC
Gate-Drain Charge	Q <sub>DD</sub>			21		nC
Turn-On Delay Time	t <sub>D(ON)</sub>	V <sub>DD</sub> =100V, V <sub>GS</sub> =10V, I <sub>D</sub> =9.5A, R <sub>G</sub> =25Ω (Note 1, 2)		41		ns
Turn-On Rise Time	t <sub>R</sub>			32		ns
Turn-Off Delay Time	t <sub>D(OFF)</sub>			127		ns
Turn-Off Fall Time	t <sub>F</sub>			27		ns
<b>SOURCE- DRAIN DIODE RATINGS AND CHARACTERISTICS</b>						
Maximum Continuous Drain-Source Diode Forward Current	I <sub>S</sub>				38	A
Maximum Pulsed Drain-Source Diode Forward Current	I <sub>SM</sub>				114	A
Drain-Source Diode Forward Voltage	V <sub>SD</sub>	I <sub>S</sub> =30A, V <sub>GS</sub> =0V			1.4	V
Body Diode Reverse Recovery Time	t <sub>rr</sub>	I <sub>S</sub> =30A, V <sub>GS</sub> =0V, dI <sub>F</sub> /dt=100A/μs		560		ns
Body Diode Reverse Recovery Charge	Q <sub>rr</sub>				11.1	

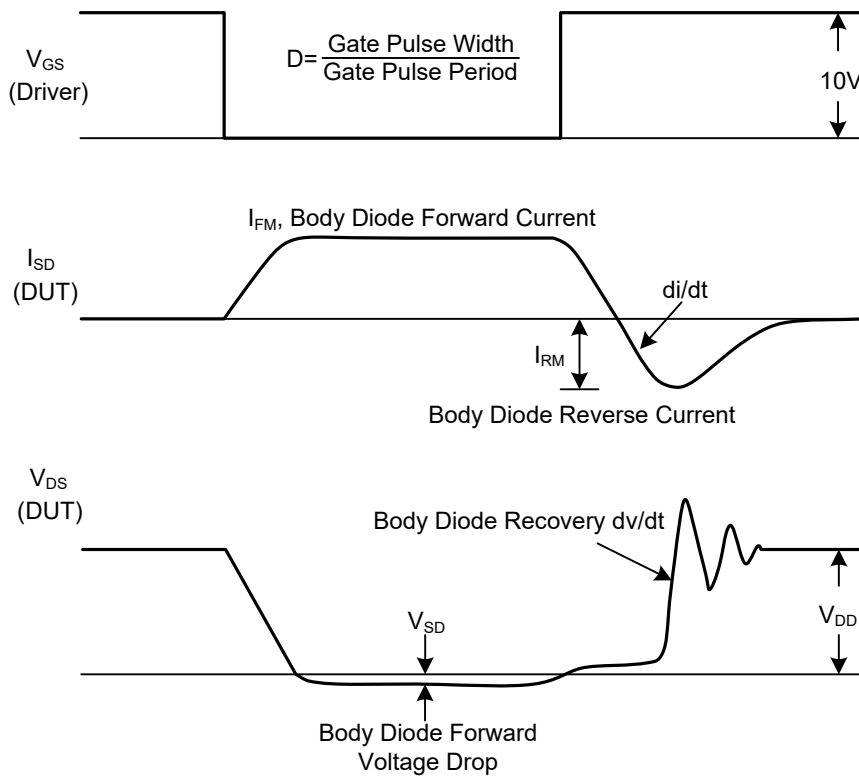
Notes: 1. Pulse Test: Pulse width ≤ 300μs, Duty cycle ≤ 2%.

2. Essentially independent of operating temperature.

■ TEST CIRCUITS AND WAVEFORMS

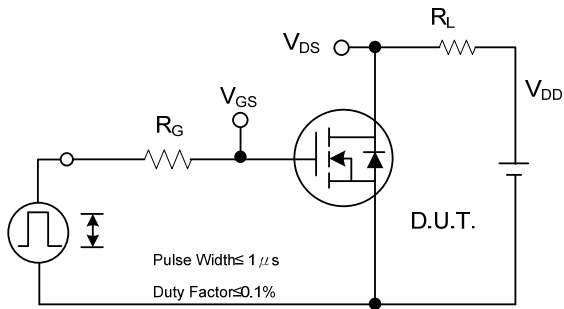


Peak Diode Recovery  $dv/dt$  Test Circuit

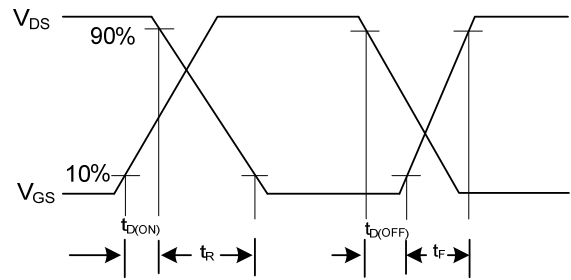


Peak Diode Recovery  $dv/dt$  Waveforms

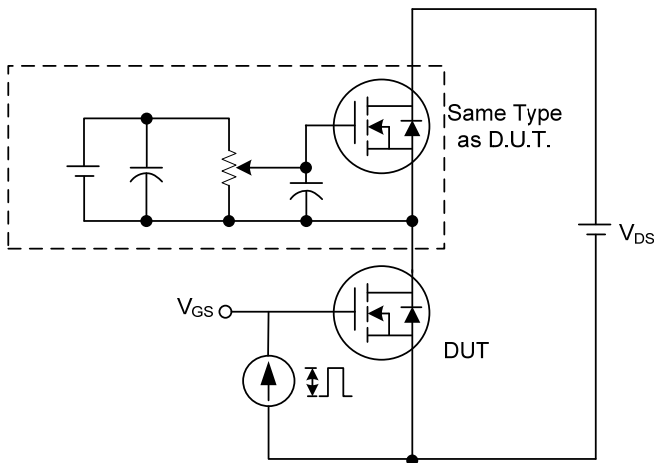
■ TEST CIRCUITS AND WAVEFORMS



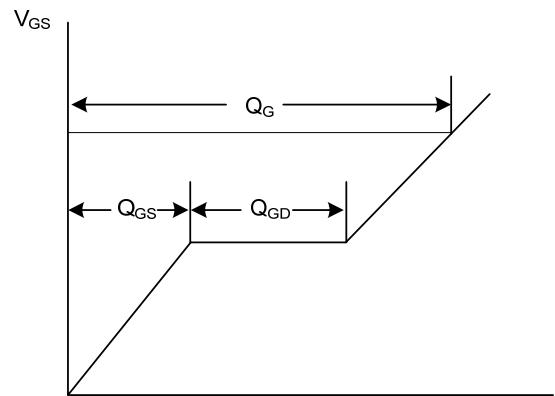
Switching Test Circuit



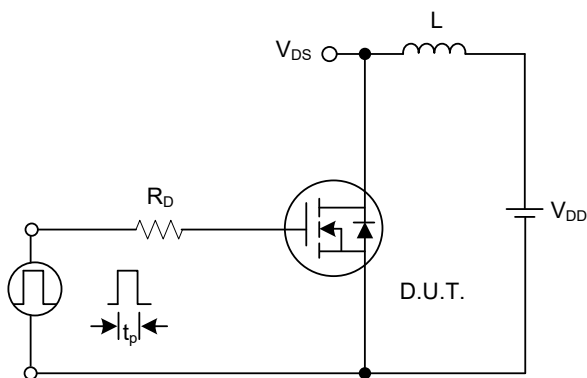
Switching Waveforms



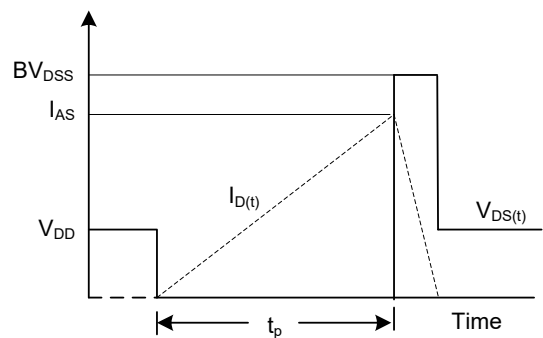
Gate Charge Test Circuit



Charge  
Gate Charge Waveform



Unclamped Inductive Switching Test Circuit



Unclamped Inductive Switching Waveforms

UTC assumes no responsibility for equipment failures that result from using products at values that exceed, even momentarily, rated values (such as maximum ratings, operating condition ranges, or other parameters) listed in products specifications of any and all UTC products described or contained herein. UTC products are not designed for use in life support appliances, devices or systems where malfunction of these products can be reasonably expected to result in personal injury. Reproduction in whole or in part is prohibited without the prior written consent of the copyright owner. UTC reserves the right to make changes to information published in this document, including without limitation specifications and product descriptions, at any time and without notice. This document supersedes and replaces all information supplied prior to the publication hereof.