



14N150-E3

Power MOSFET

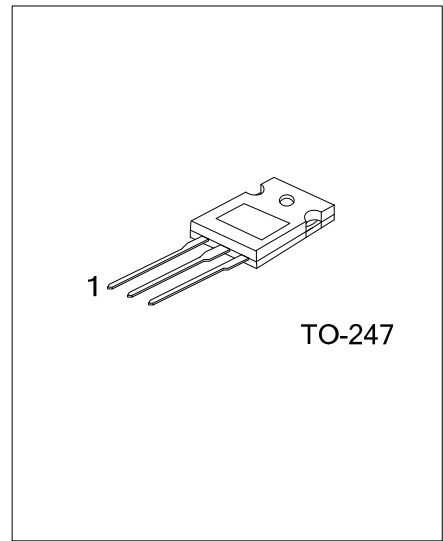
14A, 1500V N-CHANNEL POWER MOSFET

DESCRIPTION

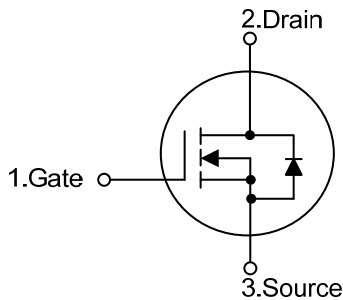
The UTC **14N150-E3** provide excellent $R_{DS(ON)}$, low gate charge and operation with low gate voltages. This device is suitable for use as a load switch or in PWM applications.

FEATURES

- * $R_{DS(ON)} \leq 2.0 \Omega @ V_{GS}=10V, I_D=7.0A$
- * Low Reverse Transfer Capacitance
- * Fast Switching Capability
- * Avalanche Energy Specified
- * Improved dv/dt Capability, High Ruggedness



SYMBOL



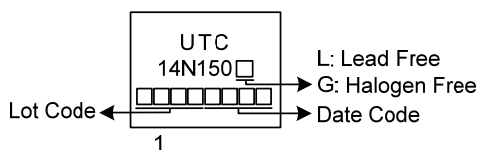
ORDERING INFORMATION

Ordering Number		Package	Pin Assignment			Packing
Lead Free	Halogen Free		1	2	3	
14N150L-T47-T	14N150G-T47-T	TO-247	G	D	S	Tube

Note: Pin Assignment: G: Gate D: Drain S: Source

<p>14N150G-T47-T</p> <p>(1)Packing Type (2)Package Type (3)Green Package</p>	<p>(1) T: Tube (2) T47: TO-247 (3) G: Halogen Free and Lead Free, L: Lead Free</p>
--	--

MARKING



■ ABSOLUTE MAXIMUM RATINGS ($T_C=25^\circ\text{C}$, unless otherwise specified)

PARAMETER		SYMBOL	RATINGS	UNIT
Drain-Source Voltage		V_{DSS}	1500	V
Gate-Source Voltage		V_{GSS}	± 30	V
Drain Current	Continuous	I_D	14	A
	Pulsed (Note 2)	I_{DM}	28	A
Avalanche Energy	Single Pulsed (Note 3)	E_{AS}	290	mJ
Peak Diode Recovery dv/dt (Note 4)		dv/dt	0.8	V/ns
Power Dissipation		P_D	310	W
Junction Temperature		T_J	+150	$^\circ\text{C}$
Storage Temperature		T_{STG}	-55 ~ +150	$^\circ\text{C}$

- Notes: 1. Absolute maximum ratings are those values beyond which the device could be permanently damaged. Absolute maximum ratings are stress ratings only and functional device operation is not implied.
 2. Repetitive Rating: Pulse width limited by maximum junction temperature.
 3. $L=30\text{mH}$, $I_{AS}=4.4\text{A}$, $V_{DD}=100\text{V}$, $R_G=25\ \Omega$, Starting $T_J = 25^\circ\text{C}$
 4. $I_{SD} \leq 14\text{A}$, $di/dt \leq 200\text{A}/\mu\text{s}$, $V_{DD} \leq BV_{DSS}$, Starting $T_J = 25^\circ\text{C}$

■ THERMAL DATA

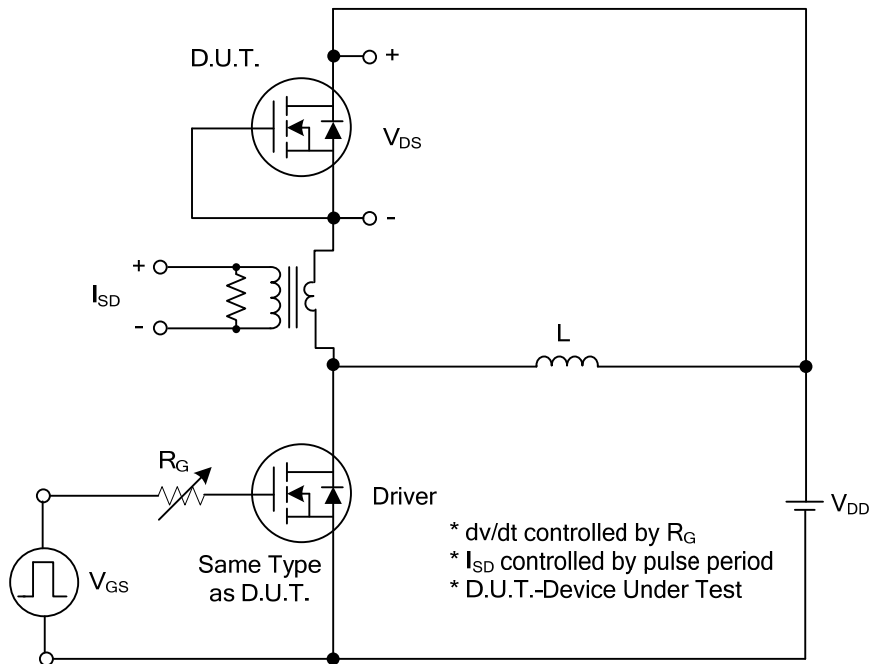
PARAMETER	SYMBOL	RATING	UNIT
Junction to Ambient	θ_{JA}	50	$^\circ\text{C}/\text{W}$
Junction to Case	θ_{JC}	0.4	$^\circ\text{C}/\text{W}$

■ ELECTRICAL CHARACTERISTICS ($T_J = 25^\circ\text{C}$, unless otherwise specified)

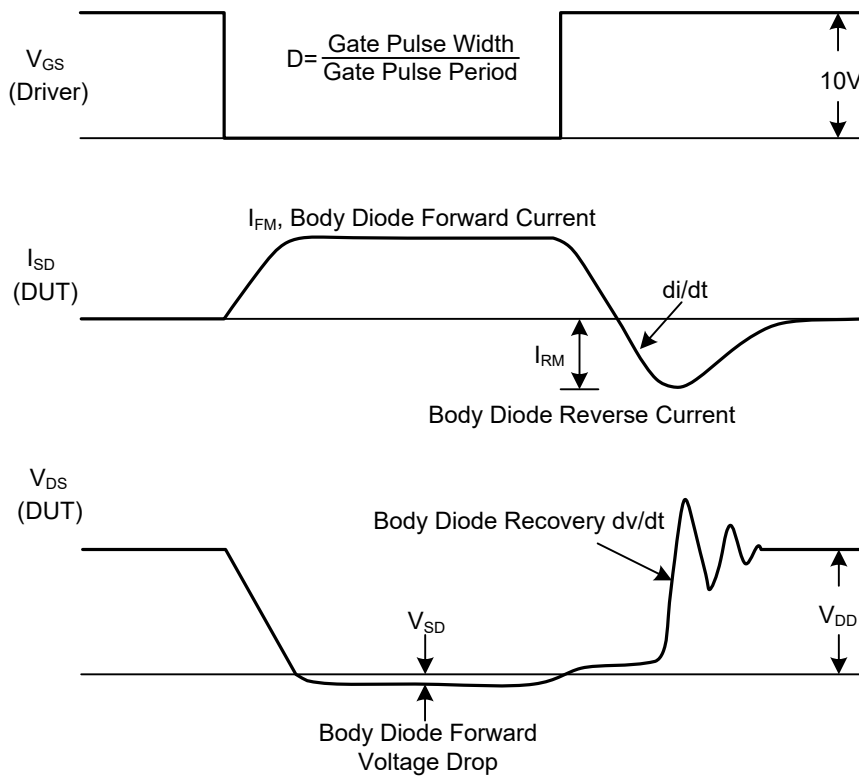
PARAMETER	SYMBOL	TEST CONDITIONS	MIN	TYP	MAX	UNIT	
OFF CHARACTERISTICS							
Drain-Source Breakdown Voltage	BV_{DSS}	$V_{GS}=0\text{V}$, $I_D=250\mu\text{A}$	1500			V	
Drain-Source Leakage Current	I_{DSS}	$V_{DS}=1500\text{V}$, $V_{GS}=0\text{V}$			10	μA	
Gate-Source Leakage Current	I_{GSS}	$V_{GS}=\pm 30\text{V}$, $V_{DS}=0\text{V}$			± 100	nA	
ON CHARACTERISTICS							
Gate Threshold Voltage	$V_{GS(TH)}$	$V_{DS}=V_{GS}$, $I_D=250\mu\text{A}$	3.0		5.0	V	
Static Drain-Source On-State Resistance	$R_{DS(ON)}$	$V_{GS}=10\text{V}$, $I_D=7.0\text{A}$			2.0	Ω	
DYNAMIC CHARACTERISTICS							
Input Capacitance	C_{ISS}	$V_{DS}=25\text{V}$, $V_{GS}=0\text{V}$, $f=1\text{MHz}$		3500		pF	
Output Capacitance	C_{OSS}				250		pF
Reverse Transfer Capacitance	C_{RSS}				50		pF
SWITCHING CHARACTERISTICS							
Total Gate Charge (Note 1)	Q_G	$V_{DS}=1200\text{V}$, $V_{GS}=10\text{V}$, $I_D=14\text{A}$, (Note 1, 2)		125		nC	
Gate-Source Charge	Q_{GS}			26		nC	
Gate-Drain Charge	Q_{GD}			56		nC	
Turn-On Delay Time (Note 1)	$t_{D(ON)}$	$V_{DD}=100\text{V}$, $V_{GS}=10\text{V}$, $I_D=14\text{A}$, $R_G=25\ \Omega$ (Note 1, 2)		62		ns	
Turn-On Rise Time	t_R			78		ns	
Turn-Off Delay Time	$t_{D(OFF)}$			380		ns	
Turn-Off Fall Time	t_F			120		ns	
SOURCE- DRAIN DIODE RATINGS AND CHARACTERISTICS							
Maximum Continuous Drain-Source Diode Forward Current	I_S				14	A	
Maximum Pulsed Drain-Source Diode Forward Current	I_{SM}				28	A	
Drain-Source Diode Forward Voltage (Note 1)	V_{SD}	$I_S=14\text{A}$, $V_{GS}=0\text{V}$			1.4	V	
Body Diode Reverse Recovery Time (Note 1)	t_{rr}	$I_S=14\text{A}$, $V_{GS}=0\text{V}$,		1540		nS	
Body Diode Reverse Recovery Charge	Q_{rr}	$dI_F/dt=100\text{A}/\mu\text{s}$		28.7		μC	

- Notes: 1. Pulse Test: Pulse width $\leq 300\mu\text{s}$, Duty cycle $\leq 2\%$.
 2. Essentially independent of operating temperature.

■ TEST CIRCUITS AND WAVEFORMS

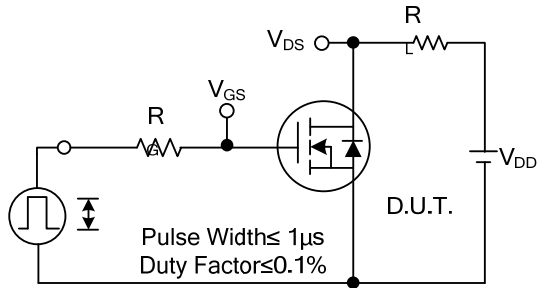


Peak Diode Recovery dv/dt Test Circuit

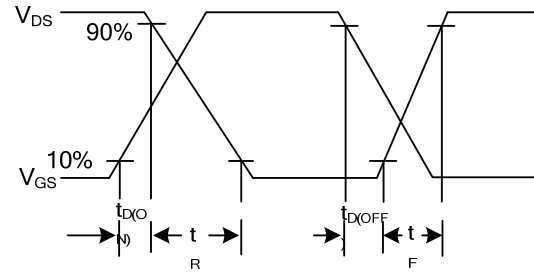


Peak Diode Recovery dv/dt Waveforms

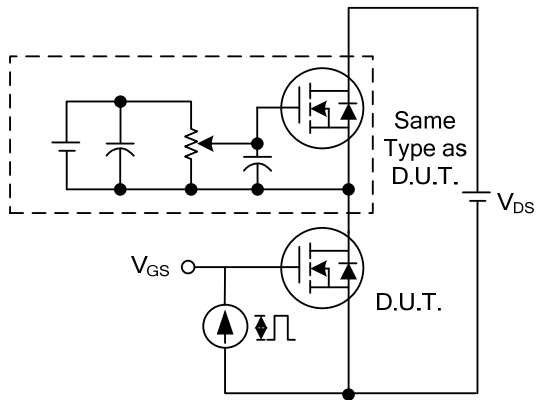
TEST CIRCUITS AND WAVEFORMS



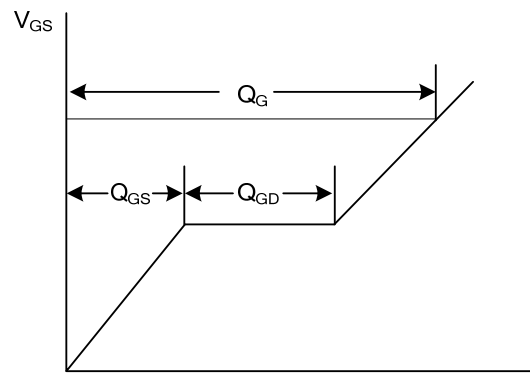
Switching Test Circuit



Switching Waveforms

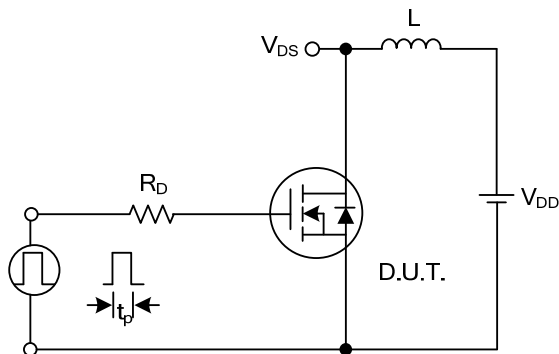


Gate Charge Test Circuit

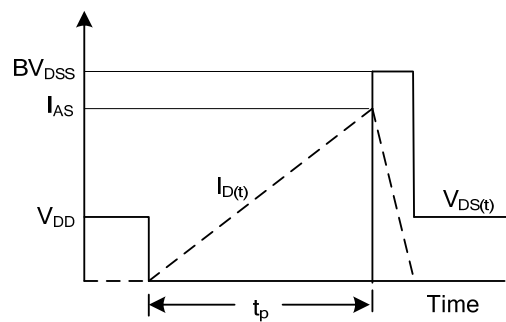


Charge

Gate Charge Waveform

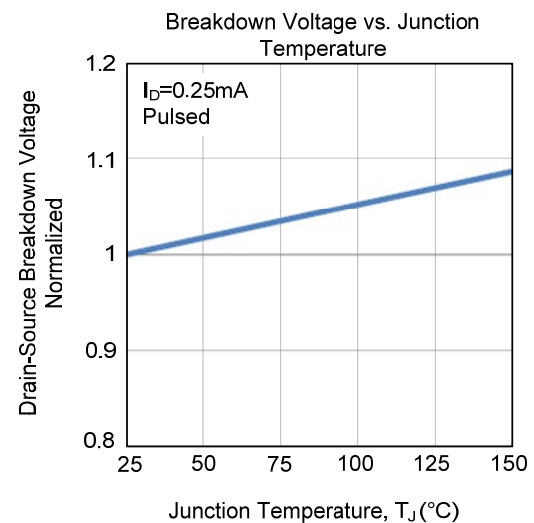
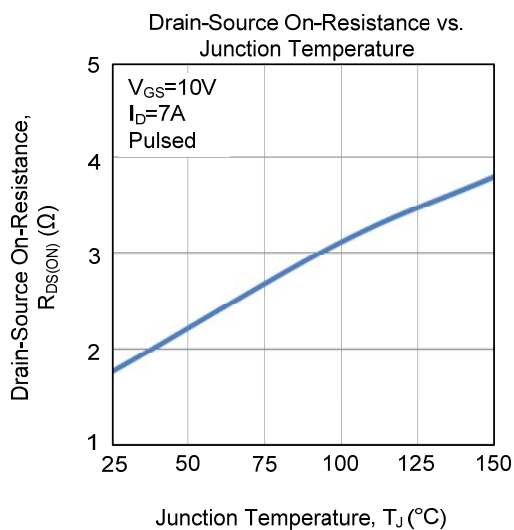
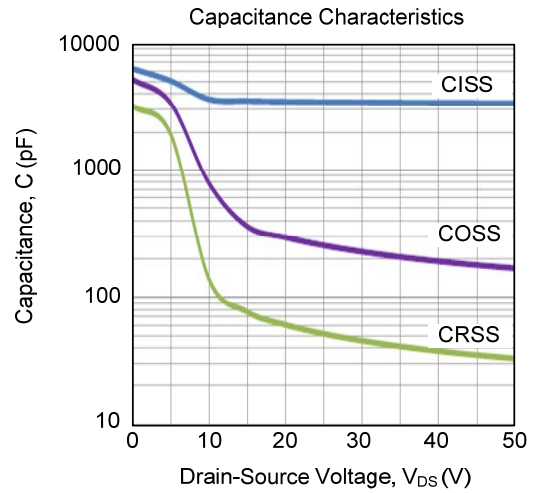
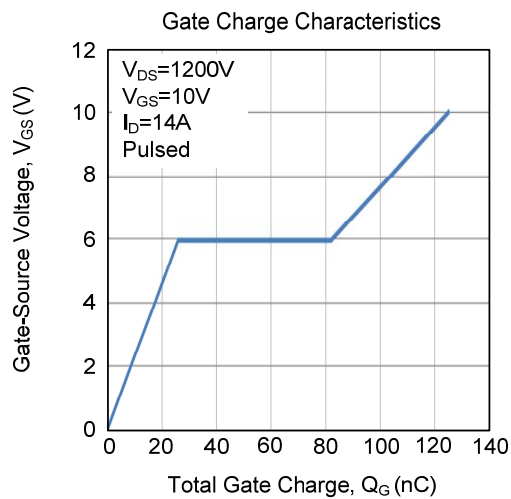
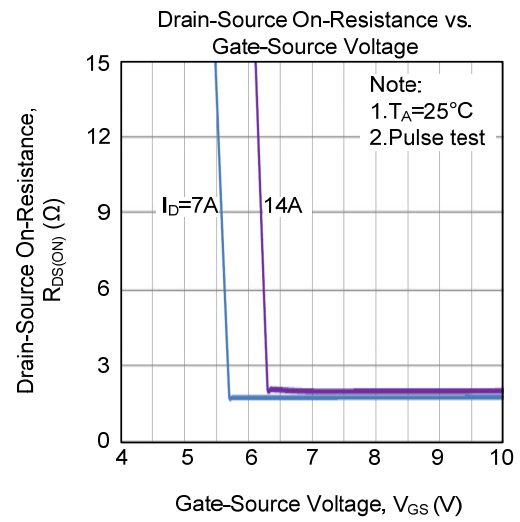
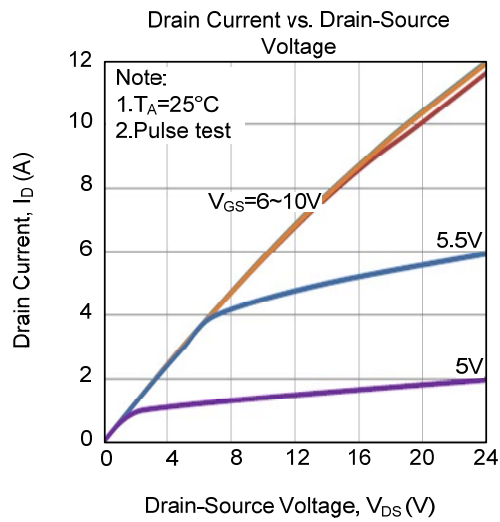


Unclamped Inductive Switching Test Circuit

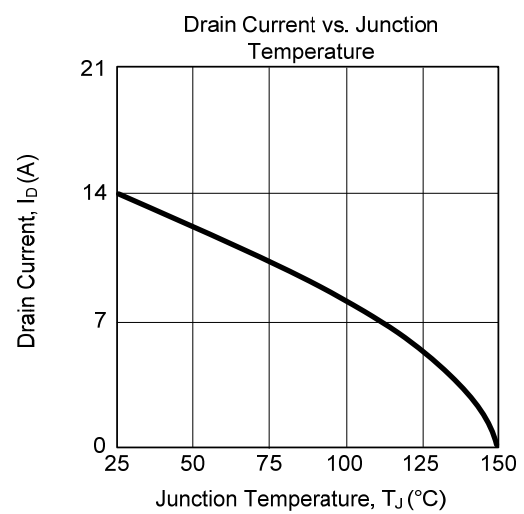
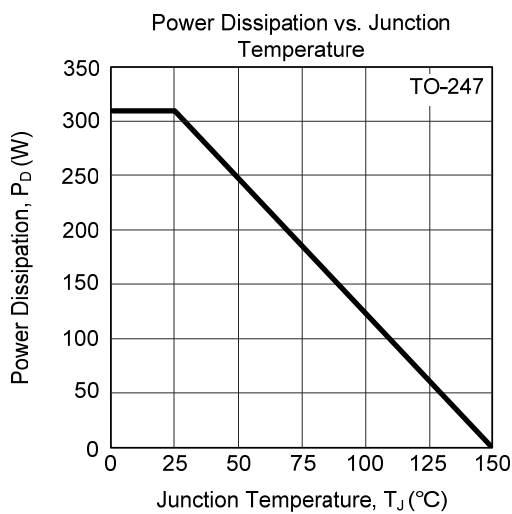
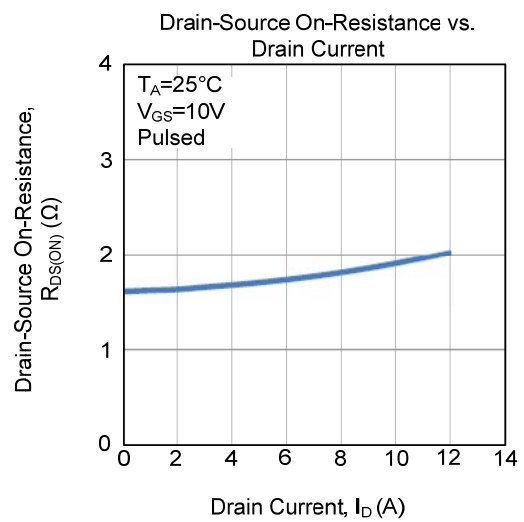
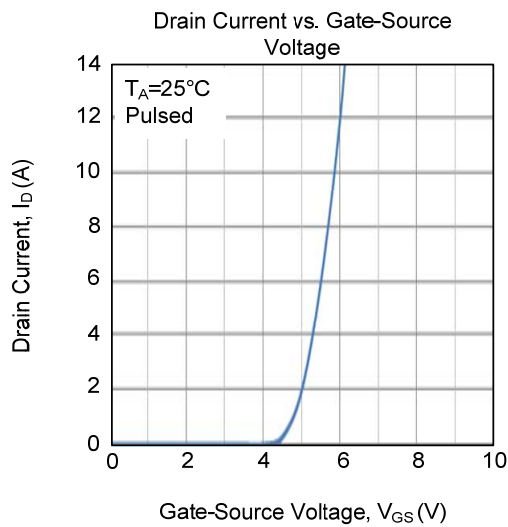
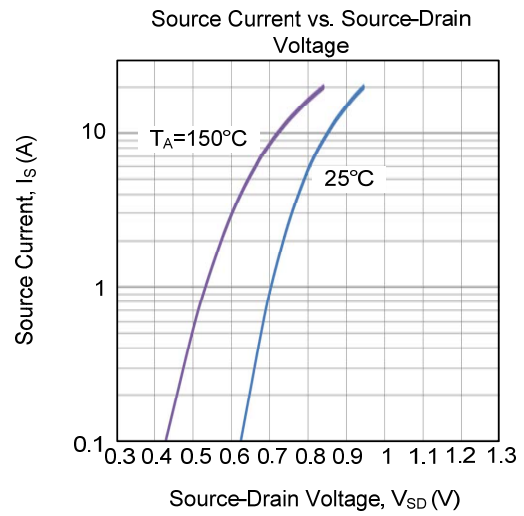
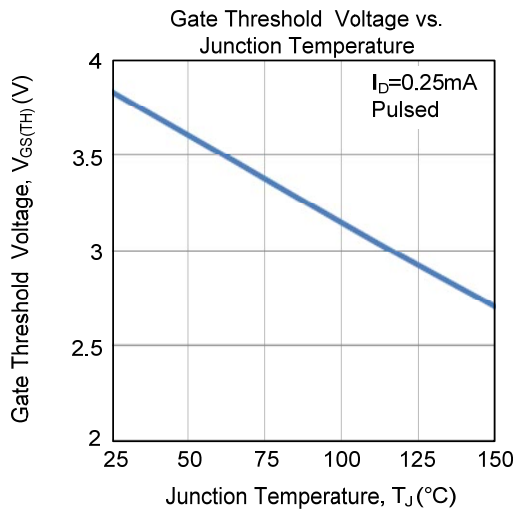


Unclamped Inductive Switching Waveforms

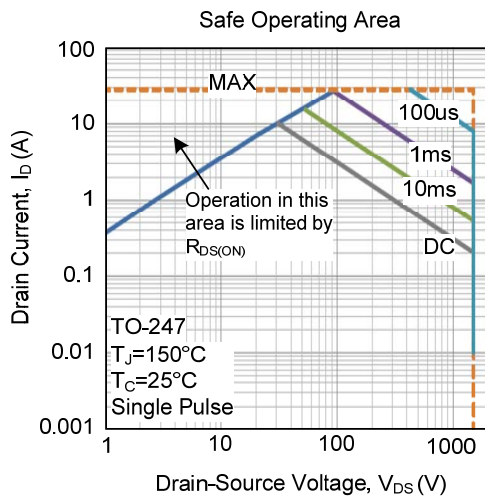
TYPICAL CHARACTERISTICS



■ TYPICAL CHARACTERISTICS (Cont.)



■ TYPICAL CHARACTERISTICS (Cont.)



UTC assumes no responsibility for equipment failures that result from using products at values that exceed, even momentarily, rated values (such as maximum ratings, operating condition ranges, or other parameters) listed in products specifications of any and all UTC products described or contained herein. UTC products are not designed for use in life support appliances, devices or systems where malfunction of these products can be reasonably expected to result in personal injury. Reproduction in whole or in part is prohibited without the prior written consent of the copyright owner. UTC reserves the right to make changes to information published in this document, including without limitation specifications and product descriptions, at any time and without notice. This document supersedes and replaces all information supplied prior to the publication hereof.