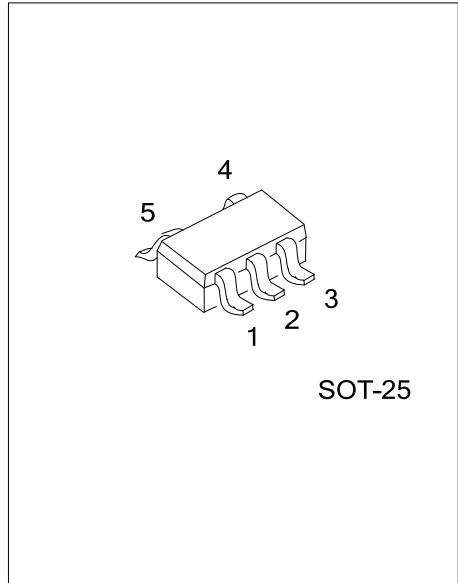




HIGH EFFICIENCY SYNCHRONOUS STEP-UP DC-DC CONVERTER WITH LOW STARTUP VOLTAGE



DESCRIPTION

The UTC **UU05052** is a high-efficiency synchronous step-up DC-DC converter. The startup voltage of this device is just 1V, making it ideal for applications operating from 1 or 2 alkaline cells. The device consumes just 17 μ A of quiescent supply current, and provides up to 400mA output current using a minimum number of readily available standard external components.

The device includes 0.19 Ω N-channel power switch and 0.21 Ω P-channel synchronous rectifier. Synchronous rectification and unique control scheme contribute to a high efficiency over a wide range of loads.

The UTC **UU05052** features fixed 3.3V/5V or from 2V to 5V adjustable output voltage.

FEATURES

- * Low Startup Voltage of 1V
- * 17 μ A Of Quiescent Supply Current
- * Less Than 1 μ A Of Shutdown Current
- * Fully Integrated N-channel Power Switch and P-channel Synchronous Rectifier
- * Fixed 3.3V/5V or Adjustable Output Voltage

ORDERING INFORMATION

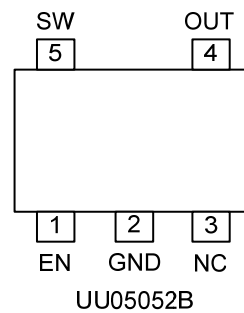
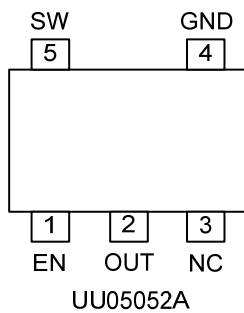
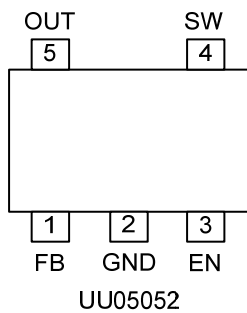
Ordering Number		Package	Packing
Lead Free	Halogen Free		
UU05052L-AF5-R	UU05052G-AF5-R	SOT-25	Tape Reel
UU05052AL-xx-AF5-R	UU05052AG-xx-AF5-R	SOT-25	Tape Reel
UU05052BL-xx-AF5-R	UU05052BG-xx-AF5-R	SOT-25	Tape Reel

<p>UU05052AG-xx-AF5-R</p> <p>(1) Packing Type (2) Package Type (3) Output Voltage Code (4) Green Package</p>	<p>(1) R: Tape Reel (2) AF5: SOT-25 (3) xx: refer to Marking Information (4) G: Halogen Free and Lead Free, L: Lead Free</p>
--	--

■ MARKING

PACKAGE	VOLTAGE CODE	MARKING
UU05052	-	
UU05052A	50: 5.0V	
UU05052B		

■ PIN CONFIGURATION

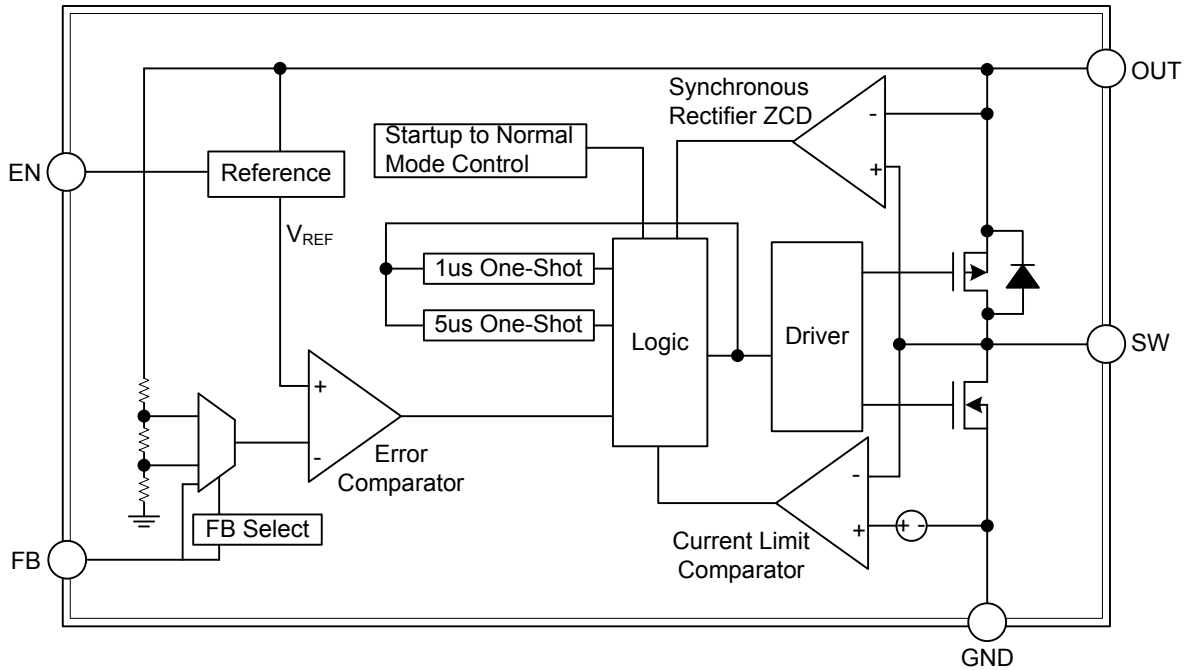


■ PIN DESCRIPTION

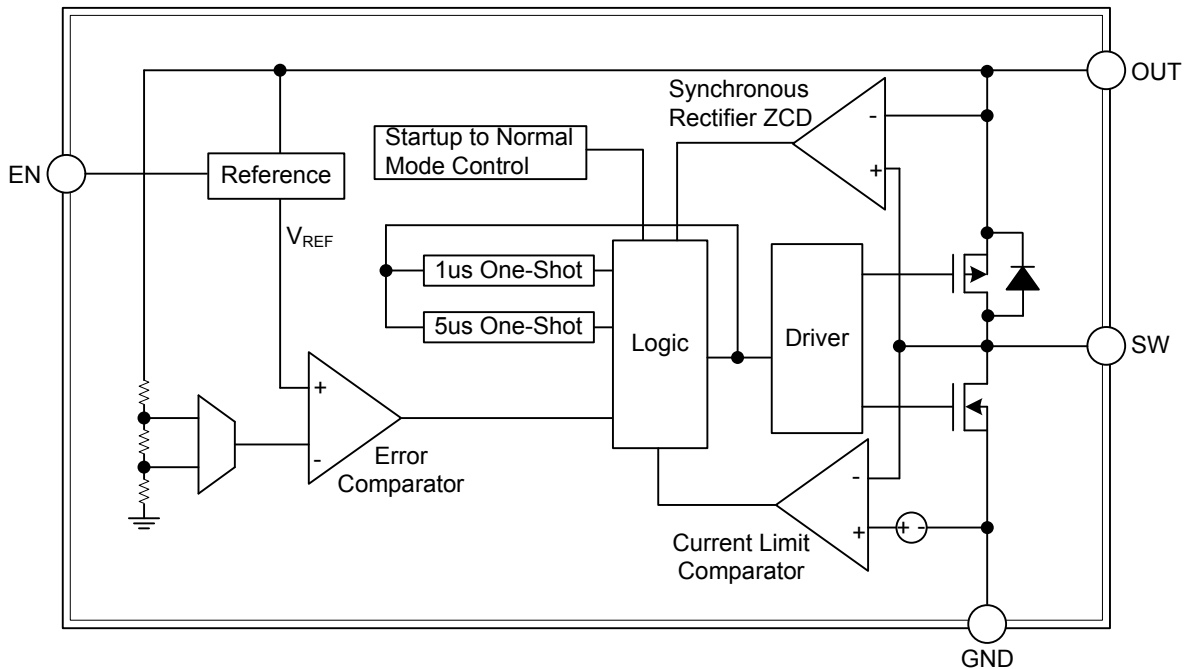
PIN NAME	DESCRIPTION
FB	Output Voltage Selected and Feedback Input. Connect to GND, $V_{OUT}=5V$; Connect to OUT, $V_{OUT}=3.3V$. Connect to a resistor divider to set 2V to 5V adjustable output voltage. For UU05052 Only
GND	Ground.
EN	Enable Input. EN high to turn on the regulator; low to turn it off.
SW	Inductor Connection
OUT	Output. OUT also provides power to the IC.

■ BLOCK DIAGRAM

For UU05052



For UU05052A, UU05052B



■ ABSOLUTE MAXIMUM RATING

PARAMETER	SYMBOL	RATINGS	UNIT
OUT To GND	V_{OUT}	6	V
EN To GND	V_{EN}	6	V
FB To GND	V_{FB}	$V_{OUT}+0.3$	V
SW To GND	V_{SW}	$V_{OUT}+0.3$	V
Continuous SW Current	I_{SW}	Internally Limited	A
Maximum Power Dissipation (Derate 5mW/°C above $T_A=50^{\circ}C$)	P_D	0.53	W
Operating Junction Temperature	T_J	-40 ~ +150	°C
Storage Temperature	T_{STG}	-55 ~ +150	°C

Note: Absolute maximum ratings are those values beyond which the device could be permanently damaged. Absolute maximum ratings are stress ratings only and functional device operation is not implied.

■ THERMAL DATA

PARAMETER	SYMBOL	RATINGS	UNIT
Junction to Ambient	θ_{JA}	190	°C/W

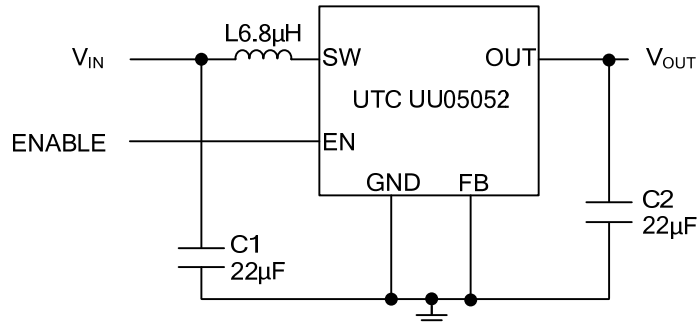
■ ELECTRICAL CHARACTERISTICS

($V_{IN}=1.5V$, $V_{OUT}=3.3V$, $T_A=25^{\circ}C$ unless otherwise specified.)

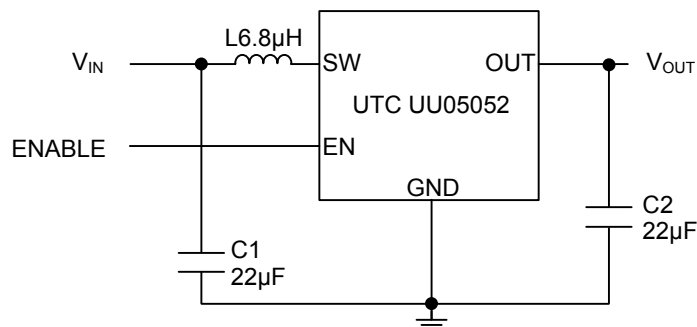
PARAMETER	SYMBOL	TEST CONDITIONS	MIN	TYP	MAX	UNIT
Minimum Operating Input Voltage	V_{IN}	After Turn-On & $V_{in}=EN$		0.6		V
Maximum Operating Input Voltage	V_{IN}				5	
Startup Voltage	V_{IN}	$I_{LOAD}=1mA$		1	1.18	V
Output Voltage	V_{OUT}	FB=OUT	3.2	3.3	3.4	V
		FB=GND	4.85	5	5.15	
Output Voltage Range		External Feedback Divider	2		5	V
Quiescent Current at OUT	I_Q	$V_{FB}=1.3V$		17	34	μA
Shutdown Supply Current	I_{SD}	EN=GND		0.1	1	μA
Startup To Normal Transition Threshold				1.85		V
FB Feedback Voltage	V_{FB}	$V_{OUT}=2V\sim 5V$	1.15	1.180	1.21	V
FB Input Current		FB=1.3V		50		nA
Power Switch Current Limit	I_{LIM}		0.7	1	1.25	A
Power Switch On Resistance	R_{ONN}	$I_{SW}=100mA$		0.19	0.4	Ω
Synchronous Rectifier On Resistance	R_{ONP}	$I_{SW}=-100mA$		0.21	0.4	Ω
SW Leakage Current		EN=GND, $V_{SW}=0V$ or 3.3V		0.1	1	μA
Maximum Switch On-Time	t_{ONMAX}		3.75	5	6.25	μs
Minimum Switch Off-Time	t_{OFFMIN}		0.75	1	1.25	μs
EN Logic Low Threshold	V_{IL}				0.5	V
EN Logic High Threshold	V_{IH}		0.8			V
EN Input Current					1	μA

■ TYPICAL APPLICATION CIRCUIT

For UU05052



For UU05052A, UU05052B



UTC assumes no responsibility for equipment failures that result from using products at values that exceed, even momentarily, rated values (such as maximum ratings, operating condition ranges, or other parameters) listed in products specifications of any and all UTC products described or contained herein. UTC products are not designed for use in life support appliances, devices or systems where malfunction of these products can be reasonably expected to result in personal injury. Reproduction in whole or in part is prohibited without the prior written consent of the copyright owner. UTC reserves the right to make changes to information published in this document, including without limitation specifications and product descriptions, at any time and without notice. This document supersedes and replaces all information supplied prior to the publication hereof.