



U74ACT244

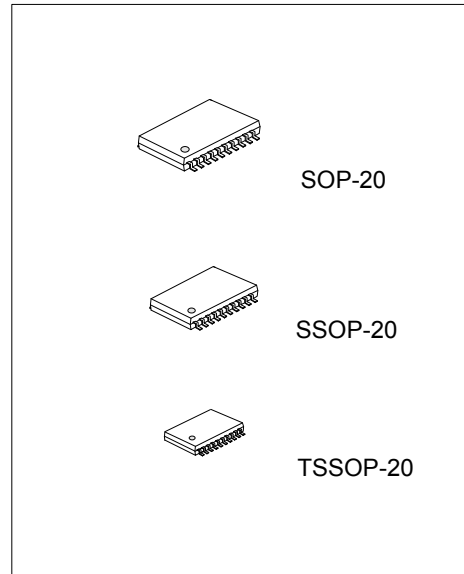
CMOS IC

OCTAL BUFFERS AND DRIVERS WITH 3-STATE OUTPUTS

DESCRIPTION

The **U74ACT244** is a octal buffers and drivers are designed specifically to improve the performance and density of 3-state memory address drivers, clock drivers, and bus-oriented receivers and transmitters.

The **U74ACT244** devices are organized as two 4-bit buffers and drivers with separate output-enable (\overline{OE}) inputs. When \overline{OE} is low, the device passes non-inverted data from the A inputs to the Y outputs. When \overline{OE} is high, the outputs are in the high-impedance state.



FEATURES

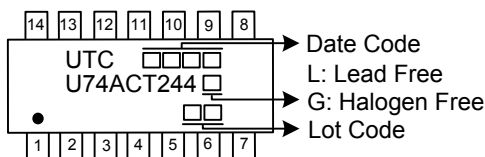
- * 4.5V to 5.5V V_{CC} operation
- * Inputs accept voltages to 5.5V
- * Low power consumption, $I_{CC} = 4\mu A$ (Max.) at 5.5V
- * TTL compatible
- * $\pm 24mA$ output driver at 5.5V

ORDERING INFORMATION

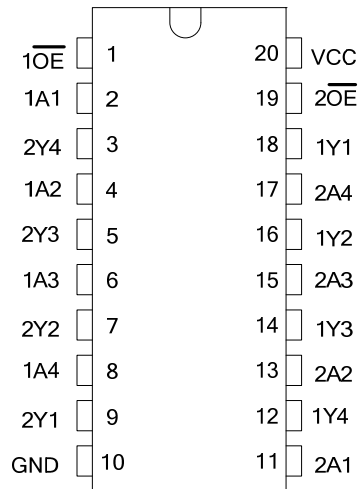
Ordering Number		Package	Packing
Lead Free	Halogen Free		
U74ACT244L-S20-R	U74ACT244G-S20-R	SOP-20	Tape Reel
U74ACT244L-R20-R	U74ACT244G-R20-R	SSOP-20	Tape Reel
U74ACT244L-P20-R	U74ACT244G-P20-R	TSSOP-20	Tape Reel

<p>U74ACT244G-S20-R</p> <p>(1) Packing Type</p> <p>(2) Package Type</p> <p>(3) Green Package</p>	<p>(1) R: Tape Reel</p> <p>(2) S20: SOP-20, R20: SSOP-20, P20: TSSOP-20</p> <p>(3) G: Halogen Free and Lead Free, L: Lead Free</p>
--	--

MARKING



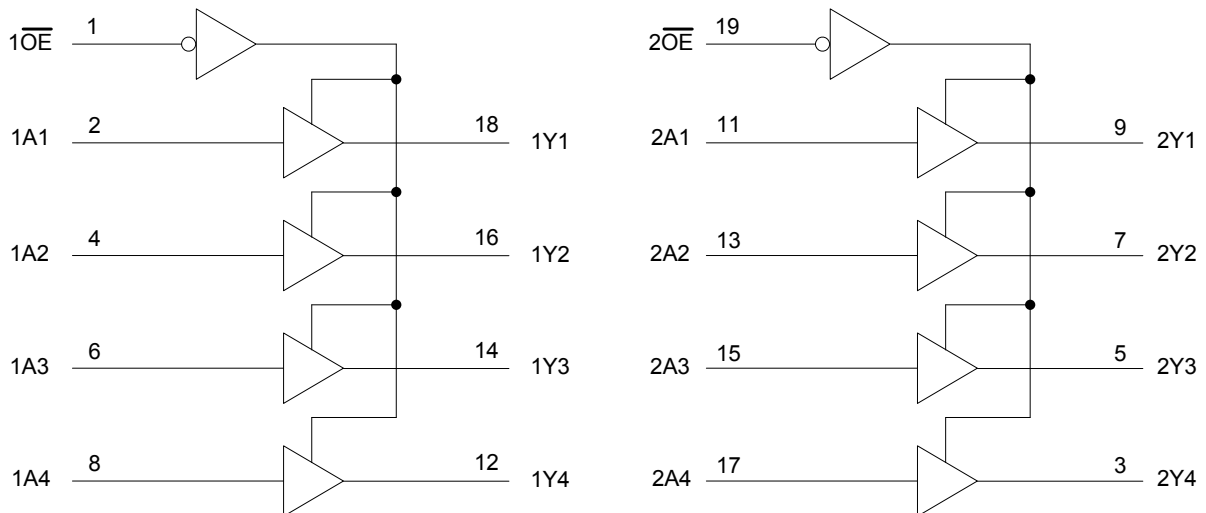
■ PIN CONFIGURATION



■ FUNCTION TABLE (each buffer)

INPUTS		OUTPUT
\overline{OE}	A	Y
L	H	H
L	L	L
H	X	Hi-Z

■ LOGIC SYMBOL (positive logic)



■ ABSOLUTE MAXIMUM RATING (T_A=25°C, unless otherwise specified) (Note 2)

PARAMETER	SYMBOL	RATINGS	UNIT
Supply Voltage	V _{CC}	-0.5 ~ 7.0	V
Input Voltage	V _{IN}	-0.5 ~ V _{CC} +0.5	V
Output Voltage	V _{OUT}	-0.5 ~ V _{CC} +0.5	V
Input Clamp Current (V _{IN} <0, or V _{IN} >V _{CC})	I _{IK}	±20	mA
Output Clamp Current (V _{OUT} <0, or V _{OUT} >V _{CC})	I _{OK}	±20	mA
Output Current	I _{OUT}	±50	mA
V _{CC} or GND Current	I _{CC}	±200	mA
Storage Temperature	T _{STG}	-65 ~ +150	°C

Note: Absolute maximum ratings are those values beyond which the device could be permanently damaged. Absolute maximum ratings are stress ratings only and functional device operation is not implied.

■ RECOMMENDED OPERATING CONDITIONS

PARAMETER	SYMBOL	RATINGS	UNIT
Supply Voltage	V _{CC}	4.5 ~ 5.5	V
Input Voltage	V _{IN}	0 ~ V _{CC}	V
Output Voltage	V _{OUT}	0 ~ V _{CC}	V
Input Transition Rise or Fall Rate	Δt/Δv	8	ns/V
Operating Temperature	T _A	-40 ~ +125	°C

■ ELECTRICAL CHARACTERISTICS (Unless otherwise specified)

PARAMETER	SYMBOL	TEST CONDITIONS	T _A =25°C			T _A =-40~+125°C			UNIT
			MIN	TYP	MAX	MIN	TYP	MAX	
High-Level Input Voltage	V _{IH}	V _{CC} =4.5V~5.5V	2			2			V
Low-Level Input Voltage	V _{IL}	V _{CC} =4.5V~5.5V			0.8			0.8	V
High-Level Output Voltage	V _{OH}	V _{CC} =4.5V, I _{OH} =-50μA	4.4	4.49		4.4			V
		V _{CC} =5.5V, I _{OH} =-50μA	5.4	5.49		5.4			V
		V _{CC} =4.5V, I _{OH} =-24mA	3.86			3.76			V
		V _{CC} =5.5V, I _{OH} =-24mA	4.86			4.76			V
		V _{CC} =5.5V, I _{OH} =-75mA (Note)	3.85			3.75			V
Low-Level Output Voltage	V _{OL}	V _{CC} =4.5V, I _{OL} =50μA		0.001	0.1			0.1	V
		V _{CC} =5.5V, I _{OL} =50μA		0.001	0.1			0.1	V
		V _{CC} =4.5V, I _{OL} =24mA			0.36			0.44	V
		V _{CC} =5.5V, I _{OL} =24mA			0.36			0.44	V
		V _{CC} =5.5V, I _{OL} =75mA (Note)			1.65			1.75	V
Input Leakage Current (A or \overline{OE} inputs)	I _{I(LEAK)}	V _{CC} =5.5V, V _{IN} =V _{CC} or GND			±0.1			±1	μA
High-impedance state Current	I _{OZ}	V _{CC} =5.5V, V _O =V _{CC} or GND, V _{I(OE)} =V _{IL} or V _{IH}			±0.25			±2.5	μA
Quiescent Supply Current	I _Q	V _{CC} =5.5V, V _{IN} =V _{CC} or GND, I _{OUT} =0			4			40	μA
Additional quiescent Supply Current	ΔI _Q	V _{CC} =5.5V, One input at 3.4V; other inputs at V _{CC} or GND		0.6	1.5			1.5	mA

Note: Not more than one output should be tested at a time, and the duration of the test should not exceed 2 ms.

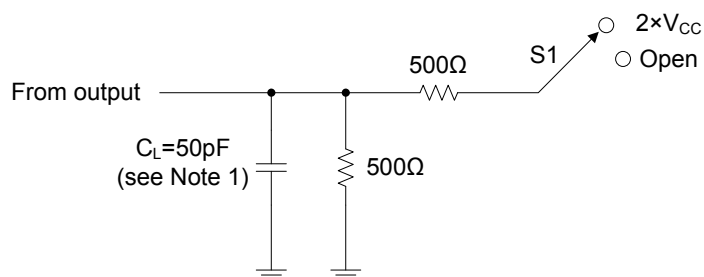
■ SWITCHING CHARACTERISTICS (Unless otherwise specified)

PARAMETER	SYMBOL	TEST CONDITIONS	T _A =25°C			T _A =-40~+125°C			UNIT
			MIN	TYP	MAX	MIN	TYP	MAX	
Propagation delay from input A to output Y, t _{PD}	t _{PLH}	V _{CC} =5±0.5V, C _L =50pF, R _L =500Ω	2	6.5	9	1		11	ns
	t _{PHL}	V _{CC} =5±0.5V, C _L =50pF, R _L =500Ω	2	7	9	1		11	ns
Propagation delay from input \overline{OE} to output Y, t _{en}	t _{PZH}	V _{CC} =5±0.5V, C _L =50pF, R _L =500Ω	1.5	7	8.5	1		10.5	ns
	t _{PZL}	V _{CC} =5±0.5V, C _L =50pF, R _L =500Ω	2	7	9.5	1		11.5	ns
Propagation delay from input \overline{OE} to output Y, t _{dis}	t _{PHZ}	V _{CC} =5±0.5V, C _L =50pF, R _L =500Ω	2	8	9.5	1		11.5	ns
	t _{PLZ}	V _{CC} =5±0.5V, C _L =50pF, R _L =500Ω	2.5	7.5	10	1		12	ns

■ OPERATING CHARACTERISTICS (T_A=25°C, unless otherwise specified)

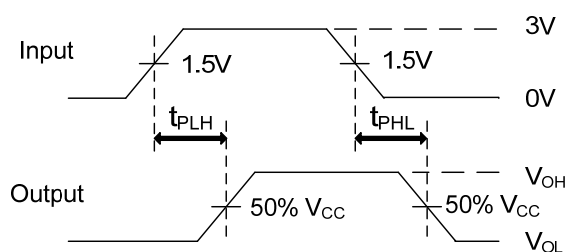
PARAMETER	SYMBOL	TEST CONDITIONS	MIN	TYP	MAX	UNIT
Input Capacitance	C _{IN}	V _{CC} =5.5V, V _{IN} = V _{CC} or GND		2.5		pF
Output Capacitance	C _{OUT}	V _{CC} =5.5V, V _{IN} = V _{CC} or GND		8		pF
Power Dissipation Capacitance (Notes 1, 2)	C _{PD}	V _{CC} =5V, C _L =50pF, f=1MHz		45		pF

TEST CIRCUIT AND WAVEFORMS

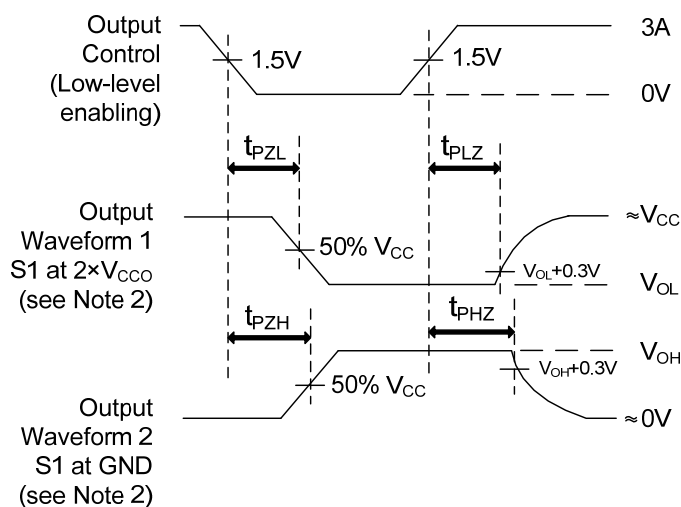


TEST	S1
t_{PLH}/t_{PHL}	Open
t_{PLZ}/t_{PZL}	$2 \times V_{CC}$
t_{PHZ}/t_{PZH}	Open

TEST CIRCUIT



PROPAGATION DELAY TIMES



ENABLE AND DISABLE TIMES

Notes: 1. C_L includes probe and jig capacitance.

2. All input pulses are supplied by generators having the following characteristics: PRR $\leq 1\text{MHz}$, $Z_O = 50\Omega$.

3. The outputs are measured one at a time with one input transition per measurement.

UTC assumes no responsibility for equipment failures that result from using products at values that exceed, even momentarily, rated values (such as maximum ratings, operating condition ranges, or other parameters) listed in products specifications of any and all UTC products described or contained herein. UTC products are not designed for use in life support appliances, devices or systems where malfunction of these products can be reasonably expected to result in personal injury. Reproduction in whole or in part is prohibited without the prior written consent of the copyright owner. UTC reserves the right to make changes to information published in this document, including without limitation specifications and product descriptions, at any time and without notice. This document supersedes and replaces all information supplied prior to the publication hereof.