



U74LVC138

CMOS IC

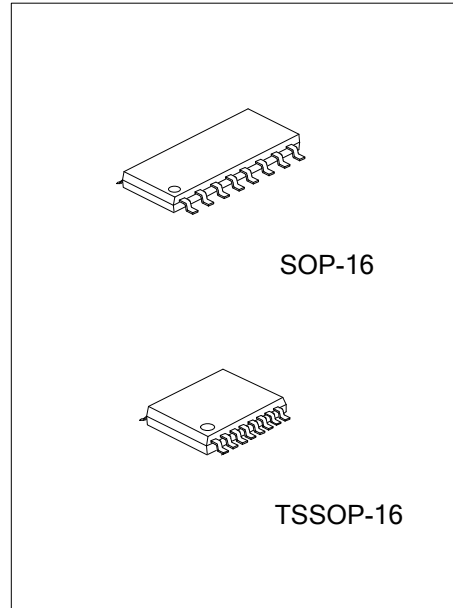
3-LINE TO 8-LINE DECODERS DEMULTIPLEXERS

DESCRIPTION

The **U74LVC138** is a 3 to 8 line decoder / demultiplexer. designed for 1.65V to 3.6V V_{CC} operation.

FEATURES

- * Operate From 1.65V to 3.6V
- * Inputs Accept Voltages to 5.5V

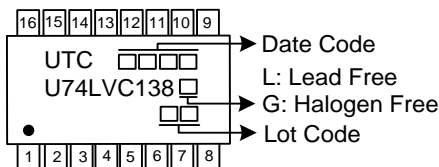


ORDERING INFORMATION

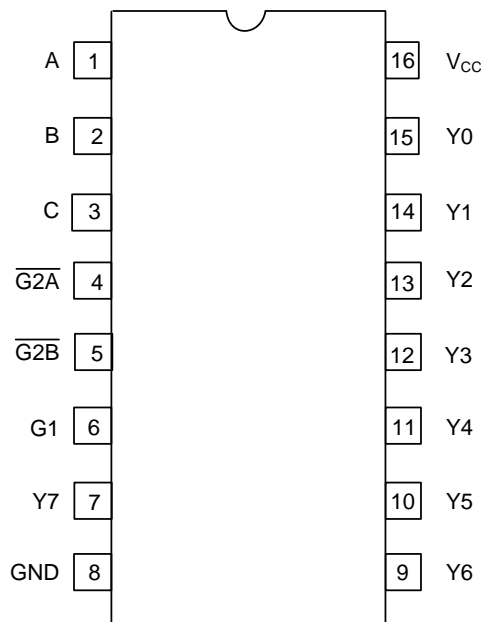
Ordering Number		Package	Packing
Lead Free	Halogen Free		
U74LVC138L-S16-R	U74LVC138G-S16-R	SOP-16	Tape Reel
U74LVC138L-P16-R	U74LVC138G-P16-R	TSSOP-16	Tape Reel

<p>U74LVC138G-S16-R</p> <p>(1) Packing Type</p> <p>(2) Package Type</p> <p>(3) Green Package</p>	<p>(1) R: Tape Reel</p> <p>(2) S16: SOP-16, P16: TSSOP-16</p> <p>(3) G: Halogen Free and Lead Free, L: Lead Free</p>
--	--

MARKING



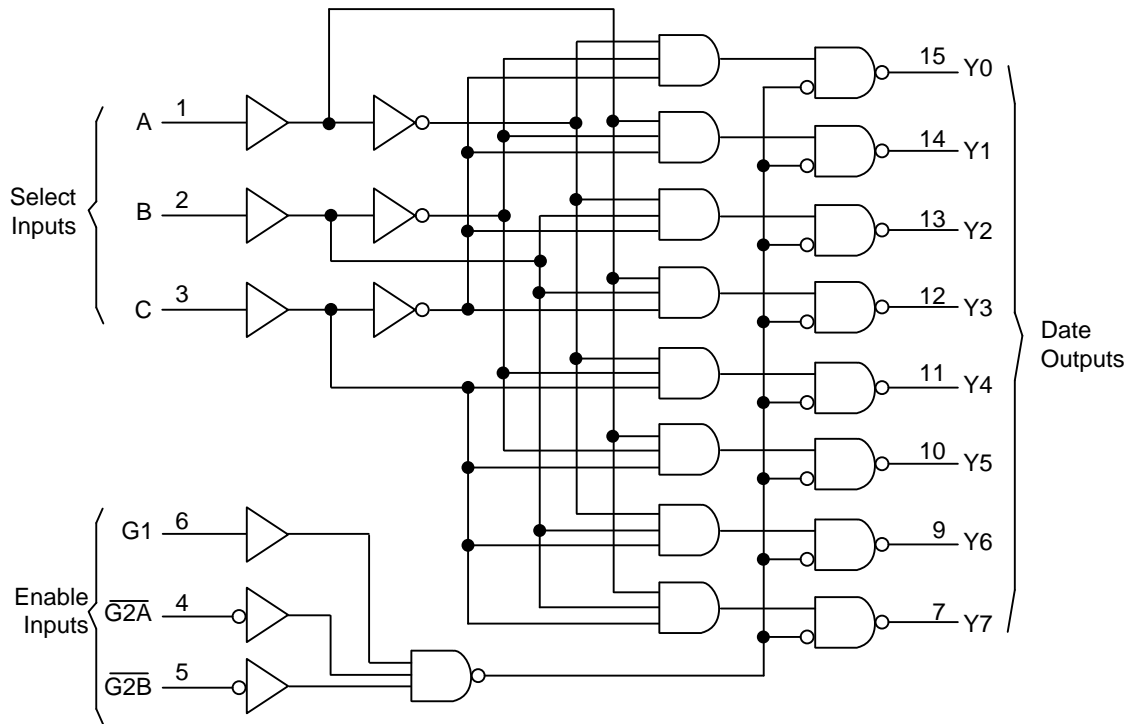
■ PIN CONFIGURATION



■ FUNCTION TABLE

INPUTS						OUTPUTS							
ENABLE			SELECT										
G1	$\overline{G2A}$	$\overline{G2B}$	C	B	A	Y0	Y1	Y2	Y3	Y4	Y5	Y6	Y7
X	H	X	X	X	X	H	H	H	H	H	H	H	H
X	X	H	X	X	X	H	H	H	H	H	H	H	H
L	X	X	X	X	X	H	H	H	H	H	H	H	H
H	L	L	L	L	L	L	H	H	H	H	H	H	H
H	L	L	L	L	H	H	L	H	H	H	H	H	H
H	L	L	L	H	L	H	H	L	H	H	H	H	H
H	L	L	L	H	H	H	H	H	L	H	H	H	H
H	L	L	H	L	L	H	H	H	H	L	H	H	H
H	L	L	H	L	H	H	H	H	H	H	L	H	H
H	L	L	H	H	L	H	H	H	H	H	H	L	H
H	L	L	H	H	H	H	H	H	H	H	H	H	L

■ LOGIC SYMBOL



■ ABSOLUTE MAXIMUM RATING (T_A=25°C , unless otherwise specified)

PARAMETER	SYMBOL	CONDITIONS	RATINGS	UNIT
Supply Voltage	V _{CC}		-0.5 ~ +6.5	V
Input Voltage (Note)	V _I		-0.5 ~ +6.5	V
Output Voltage	V _{OUT}	Output in the high or low state	-0.5 ~ V _{CC} +0.5	V
Continuous V _{CC} or GND Current	I _{CC}		±100	mA
Continuous Output Current	I _{OUT}		±50	mA
Input Clamp Current	I _{IK}	V _{IN} <0V	-50	mA
Output Clamp Current	I _{OK}	V _{OUT} <0V	-50	mA
Storage Temperature Range	T _{STG}		-65 ~ +150	°C

Note: Absolute maximum ratings are those values beyond which the device could be permanently damaged. Absolute maximum ratings are stress ratings only and functional device operation is not implied.

■ RECOMMENDED OPERATING CONDITIONS

PARAMETER	SYMBOL	TEST CONDITIONS	MIN	TYP	MAX	UNIT
Supply Voltage	V _{CC}	Operating	1.65		3.6	V
		Data Retention Only	1.5			V
Input Voltage	V _{IN}		0		5.5	V
Output Voltage	V _{OUT}		0		V _{CC}	V
Operating Temperature	T _A		-40		+125	°C

■ ELECTRICAL CHARACTERISTICS (T_A=25°C , unless otherwise specified)

PARAMETER	SYMBOL	TEST CONDITIONS	MIN	TYP (Note 1)	MAX	UNIT
High-level Input Voltage	V _{IH}	V _{CC} =1.8V±0.15V	0.65×V _{CC}			V
		V _{CC} =2.5V±0.2V	1.7			V
		V _{CC} =3.3V±0.3V	2.0			V
Low-level Input Voltage	V _{IL}	V _{CC} =1.8V±0.15V			0.35×V _{CC}	V
		V _{CC} =2.5V±0.2V			0.7	V
		V _{CC} =3.3V±0.3V			0.8	V
High-Level Output Voltage	V _{OH}	V _{CC} =1.65V ~ 3.6V, I _{OH} =-100μA	V _{CC} -0.2			V
		V _{CC} =1.65V, I _{OH} =-4mA	1.2			V
		V _{CC} =2.3V, I _{OH} =-8mA	1.7			V
		V _{CC} =2.7V, I _{OH} =-12mA	2.2			V
		V _{CC} =3.0V	I _{OH} =-12mA I _{OH} =-24mA	2.4 2.2		
Low-Level Output Voltage	V _{OL}	V _{CC} =1.65V ~ 3.6V, I _{OL} =100μA			0.2	V
		V _{CC} =1.65V, I _{OL} =4mA			0.45	V
		V _{CC} =2.3V, I _{OL} =8mA			0.7	V
		V _{CC} =2.7V, I _{OL} =12mA			0.4	V
		V _{CC} =3.0V, I _{OL} =24mA			0.55	V
Input Leakage Current	I _{I(LEAK)}	V _{CC} =3.6V, V _I =5.5V or GND			±5	μA
Quiescent Supply Current	I _{CC}	V _{CC} =3.6V, V _I =V _{CC} or GND, I _{OUT} =0			10	μA
Additional Quiescent Supply Current Per Input Pin	ΔI _{CC}	V _{CC} =2.7~3.6V, One Input at V _{CC} -0.6V, Other Inputs at V _{CC} or GND			500	μA
Input Capacitance	C _I	V _{CC} =3.3V, V _I = V _{CC} or GND		5		pF

Note: All typical values are at V_{CC}=3.3V, T_A=25°C.

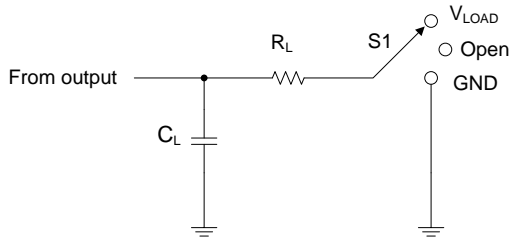
■ **SWITCHING CHARACTERISTICS** ($T_A = 25^\circ\text{C}$, unless otherwise specified)

Parameter	SYMBOL	TEST CONDITIONS	MIN	MAX	UNIT
Propagation delay from Input(A or B or C) to Output (Y)	t_{PD}	$V_{CC}=1.8V\pm 0.15V$	1.0	22	ns
		$V_{CC}=2.5V\pm 0.2V$	1.0	9.9	ns
		$V_{CC}=3.3V\pm 0.3V$	1.0	6.7	ns
Propagation delay from Input($\overline{G2A}$ or $\overline{G2B}$ or G1) to Output (Y)	t_{PD}	$V_{CC}=1.8V\pm 0.15V$	1.0	21	ns
		$V_{CC}=2.5V\pm 0.2V$	1.0	9.4	ns
		$V_{CC}=3.3V\pm 0.3V$	1.0	7.4	ns

■ **OPERATING CHARACTERISTICS** ($f=10\text{MHz}$, $T_A = 25^\circ\text{C}$, unless otherwise specified)

PARAMETER	SYMBOL	TEST CONDITIONS	MIN	TYP	MAX	UNIT
Power Dissipation Capacitance	C_{PD}	$V_{CC}=1.8V$		25		pF
		$V_{CC}=2.5V$		26		pF
		$V_{CC}=3.3V$		27		pF

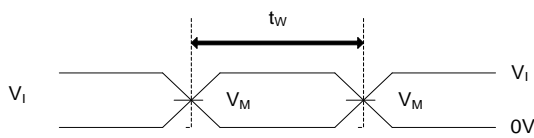
TEST CIRCUIT AND WAVEFORMS



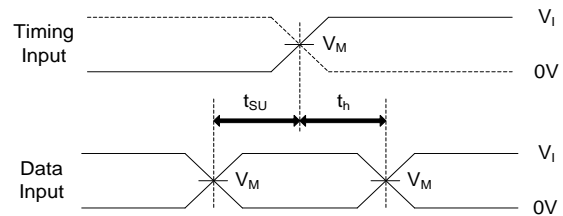
TEST	S1
t_{PLH}/t_{PHL}	Open

Test Circuit

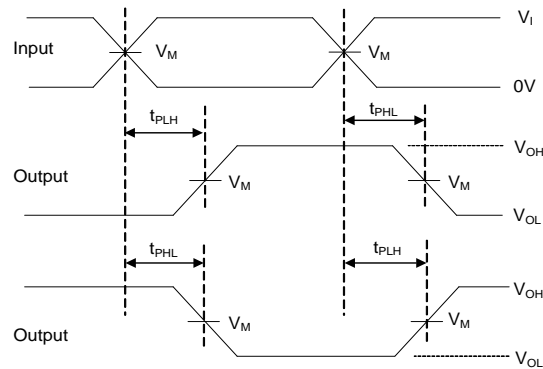
V_{CC}	INPUTS		V_M	V_{LOAD}	C_L	R_L	V_{Δ}
	V_{IN}	t_R/t_F					
$1.8V \pm 0.15V$	V_{CC}	$\leq 2ns$	$V_{CC}/2$	$2 \times V_{CC}$	30pF	1K Ω	0.15V
2.3V	V_{CC}	$\leq 2ns$	$V_{CC}/2$	$2 \times V_{CC}$	30pF	500 Ω	0.15V
2.7V	2.7V	$\leq 2.5ns$	1.5V	6V	50pF	500 Ω	0.3V
$3.3V \pm 0.3V$	2.7V	$\leq 2.5ns$	1.5V	6V	50pF	500 Ω	0.3V



VOLTAGE WAVEFORMS PULSE DURATION



VOLTAGE WAVEFORMS SETUP AND HOLD TIMES



Voltage Waveforms Propagation Delay Times

- Notes: 1. C_L includes probe and jig capacitance.
 2. All input pulses are supplied by generators having the following characteristics: PRR $\leq 10MHz$, $Z_O = 50\Omega$.

UTC assumes no responsibility for equipment failures that result from using products at values that exceed, even momentarily, rated values (such as maximum ratings, operating condition ranges, or other parameters) listed in products specifications of any and all UTC products described or contained herein. UTC products are not designed for use in life support appliances, devices or systems where malfunction of these products can be reasonably expected to result in personal injury. Reproduction in whole or in part is prohibited without the prior written consent of the copyright owner. UTC reserves the right to make changes to information published in this document, including without limitation specifications and product descriptions, at any time and without notice. This document supersedes and replaces all information supplied prior to the publication hereof.