



UAS15V

Preliminary

LINEAR INTEGRATED CIRCUIT

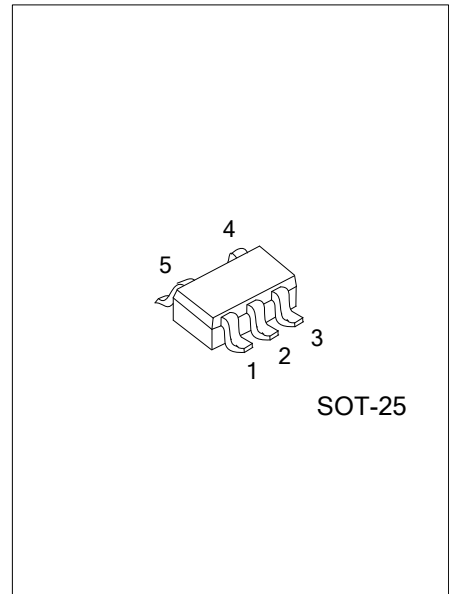
WIDE OPERATING VOLTAGE RANGE REGULATOR WITH ON/OFF CONTROL

DESCRIPTION

The IC is a wide operating range regulator of fixed output voltage 14.5V with a on/off control terminal.

FEATURES

- * Operating voltage range: 16V~60V
- * Fixed output voltage: 14.5V @ 25°C
- * ON/OFF control terminal

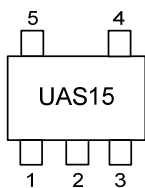


ORDERING INFORMATION

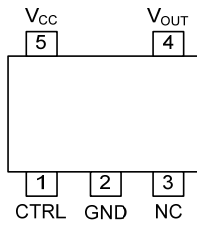
Ordering Number		Package	Packing
Lead Free	Halogen Free		
UAS15VL-AF5-R	UAS15VG-AF5-R	SOT-25	Tape Reel

<p>UAS15VG-AF5-R</p> <p>(1) Packing Type</p> <p>(2) Package Type</p> <p>(3) Green Package</p>	<p>(1) R: Tape Reel</p> <p>(2) AF5: SOT-25</p> <p>(3) G: Halogen Free and Lead Free, L: Lead Free</p>
---	---

MARKING



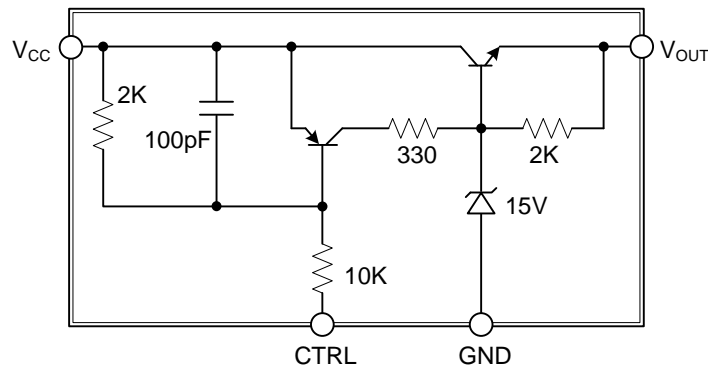
■ PIN CONFIGURATION



■ PIN DESCRIPTION

PIN NO.	PIN NAME	DESCRIPTION
1	CTRL	ON/OFF control of the regulator, ON state to GND and OFF state to V_{CC} or open
2	GND	Ground
3	NC	Not connect
4	V_{OUT}	Output of the regulator
5	V_{CC}	Power Supply

■ BLOCK DIAGRAM



■ ABSOLUTE MAXIMUM RATING

PARAMETER	SYMBOL	RATINGS	UNIT
Input Voltage	V_{CC}	60	V
Output Current	I_o	0.05	A
Operating Temperature	T_J	-40 ~ +125	°C
Storage Temperature	T_{STG}	-40 ~ +150	°C

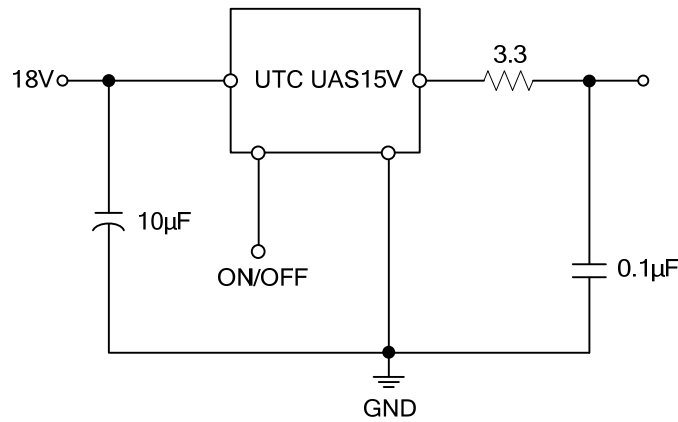
Note: Absolute maximum ratings are those values beyond which the device could be permanently damaged. Absolute maximum ratings are stress ratings only and functional device operation is not implied.

■ ELECTRICAL CHARACTERISTICS

$V_{CC}=18V$, CTRL connect to gnd. All voltage referenced to GND unless otherwise specified.

PARAMETER	SYMBOL	TEST CONDITIONS	MIN	TYP	MAX	UNIT
Power Supply Range	V_{CC}	$I_o=10mA$	16		60	V
Power Supply Current	I_{CC}	$V_{CC}=20V$		7	10	mA
		$V_{CC}=40V$		12	17	
Output Voltage	V_{OUT}	$V_{CC}=18V, I_{OUT}=10mA$	13.8	14.5	15.2	V
		$V_{CC}=40V, I_{OUT}=20mA/40mA$	14.0	14.7	15.4	
Output Voltage At OFF State	V_{OUT_OFF}	$V_{CC}=18V, R_L=100k$		0	0.5	V
ON/OFF Control Threshold	V_{CTRL}	$V_{CC}=18V, R_L=10k$	13	14	15	V

■ TYPICAL APPLICATION CIRCUIT



UTC assumes no responsibility for equipment failures that result from using products at values that exceed, even momentarily, rated values (such as maximum ratings, operating condition ranges, or other parameters) listed in products specifications of any and all UTC products described or contained herein. UTC products are not designed for use in life support appliances, devices or systems where malfunction of these products can be reasonably expected to result in personal injury. Reproduction in whole or in part is prohibited without the prior written consent of the copyright owner. UTC reserves the right to make changes to information published in this document, including without limitation specifications and product descriptions, at any time and without notice. This document supersedes and replaces all information supplied prior to the publication hereof.