



03N70-KW

Preliminary

Power MOSFET

0.3A, 700V N-CHANNEL POWER MOSFET

DESCRIPTION

The UTC **03N70-KW** is a high voltage power MOSFET and is designed to have better characteristics, such as fast switching time, low gate charge, low on-state resistance and have a high rugged avalanche characteristics. This power MOSFET is usually used at high speed switching applications in power supplies, PWM motor controls, high efficient DC to DC converters and bridge circuits.

FEATURES

- * $R_{DS(on)} < 28\Omega @ V_{GS}=10V, I_D=0.15A$
- * High breakdown voltage

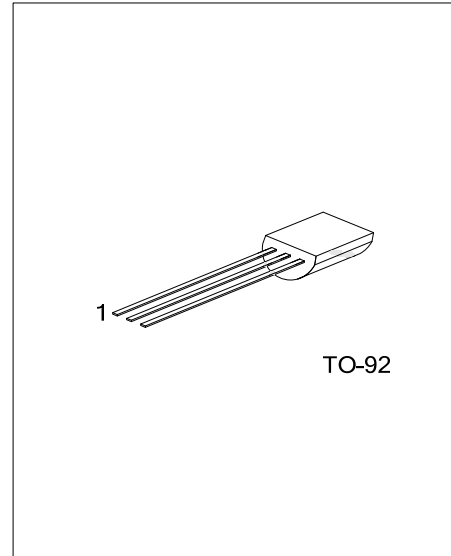
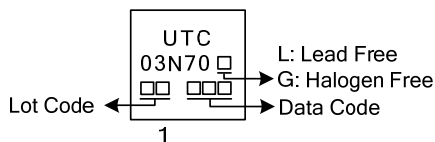
ORDERING INFORMATION

Ordering Number		Package	Pin Assignment			Packing
Lead Free	Halogen Free		1	2	3	
03N70L-T92-B	03N70G-T92-B	TO-92	G	D	S	Tape Box
03N70L-T92-K	03N70G-T92-K	TO-92	G	D	S	Bulk

Note: Pin Assignment: G: Gate D: Drain S: Source

<p>03N70L-T92-B</p> <p>(1) Packing Type</p> <p>(2) Package Type</p> <p>(3) Green Package</p>	<p>(1) B: Tape Box, K: Bulk</p> <p>(2) T92: TO-92</p> <p>(3) L: Lead Free, G: Halogen Free and Lead Free</p>
--	--

MARKING



■ ABSOLUTE MAXIMUM RATINGS ($T_C = 25^\circ\text{C}$, unless otherwise specified)

PARAMETER	SYMBOL	RATINGS	UNIT
Drain-Source Voltage	V_{DSS}	700	V
Gate-Source Voltage	V_{GSS}	± 30	V
Drain Current	Continuous	I_D	0.3
	Pulsed	I_{DM}	1.2
Avalanche Current	I_{AR}	0.3	A
Power Dissipation	P_D	425	mW
Junction Temperature	T_J	150	$^\circ\text{C}$
Storage Temperature Range	T_{STG}	-55 ~ +150	$^\circ\text{C}$

Notes: 1. Absolute maximum ratings are those values beyond which the device could be permanently damaged.

Absolute maximum ratings are stress ratings only and functional device operation is not implied.

2. Repetitive Rating : Pulse width limited by maximum junction temperature

■ THERMAL DATA

PARAMETER	SYMBOL	RATINGS	UNIT
Junction to Ambient	θ_{JA}	180	$^\circ\text{C}/\text{W}$
Junction to Case	θ_{JC}	38	$^\circ\text{C}/\text{W}$

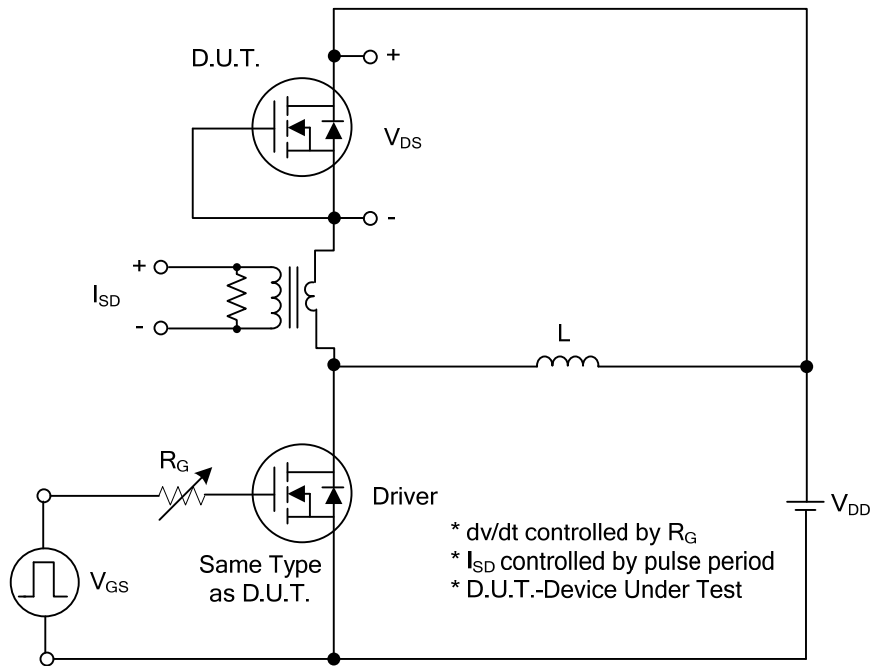
■ ELECTRICAL CHARACTERISTICS ($T_C = 25^\circ\text{C}$, unless otherwise specified)

PARAMETER	SYMBOL	TEST CONDITIONS	MIN	TYP	MAX	UNIT
OFF CHARACTERISTICS						
Drain-Source Breakdown Voltage	BV_{DSS}	$I_D = 250\mu\text{A}$, $V_{GS} = 0\text{V}$	700			V
Drain-Source Leakage Current	I_{DSS}	$V_{DS} = 700\text{V}$, $V_{GS} = 0\text{V}$			10	μA
Gate-Source Leakage Current	I_{GSS}	Forward			+100	nA
		Reverse	$V_{GS} = +30\text{V}$, $V_{DS} = 0\text{V}$			-100
ON CHARACTERISTICS						
Gate Threshold Voltage	$V_{GS(TH)}$	$V_{DS} = V_{GS}$, $I_D = 250\mu\text{A}$	2.0		4.0	V
Static Drain-Source On-State Resistance	$R_{DS(ON)}$	$V_{GS} = 10\text{V}$, $I_D = 0.15\text{A}$			28	Ω
DYNAMIC PARAMETERS						
Input Capacitance	C_{ISS}	$V_{GS} = 0\text{V}$, $V_{DS} = 25\text{V}$, $f = 1.0\text{MHz}$		68		pF
Output Capacitance	C_{OSS}			10.4		pF
Reverse Transfer Capacitance	C_{RSS}			3.8		pF
SWITCHING PARAMETERS						
Total Gate Charge	Q_G	$V_{DS} = 50\text{V}$, $V_{GS} = 10\text{V}$, $I_D = 0.3\text{A}$, $I_D = 100\mu\text{A}$ (Note 1, 2)		7.3		nC
Gate to Source Charge	Q_{GS}			0.6		nC
Gate to Drain Charge	Q_{GD}			0.6		nC
Turn-ON Delay Time	$t_{D(ON)}$	$V_{DS} = 30\text{V}$, $V_{GS} = 10\text{V}$, $I_D = 0.3\text{A}$, $R_G = 25\Omega$ (Note 1, 2)		31		ns
Rise Time	t_R			12		ns
Turn-OFF Delay Time	$t_{D(OFF)}$			50		ns
Fall-Time	t_F			11		ns
SOURCE- DRAIN DIODE RATINGS AND CHARACTERISTICS						
Maximum Body-Diode Continuous Current	I_S				0.3	A
Maximum Body-Diode Pulsed Current	I_{SM}				1.2	A
Drain-Source Diode Forward Voltage	V_{SD}	$I_S = 0.3\text{A}$, $V_{GS} = 0\text{V}$			1.4	V

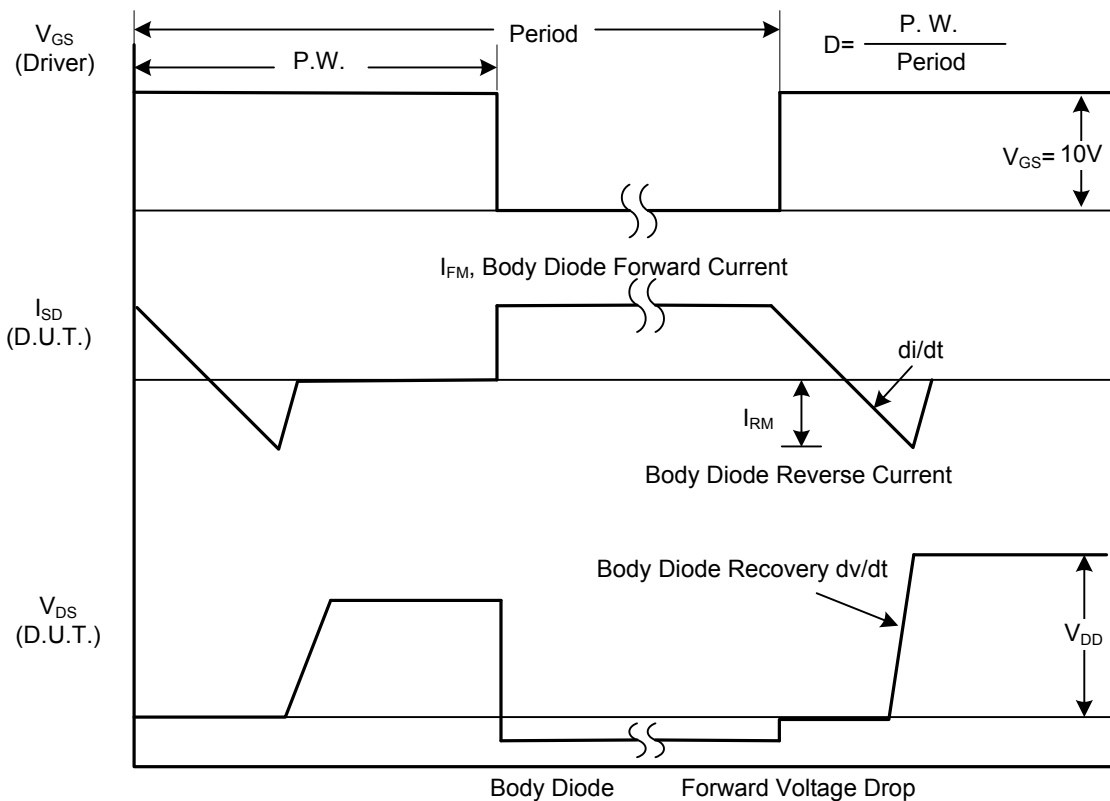
Notes: 1. Pulse Test: Pulse width $\leq 300\mu\text{s}$, Duty cycle $\leq 2\%$.

2. Essentially independent of operating temperature.

■ TEST CIRCUITS AND WAVEFORMS

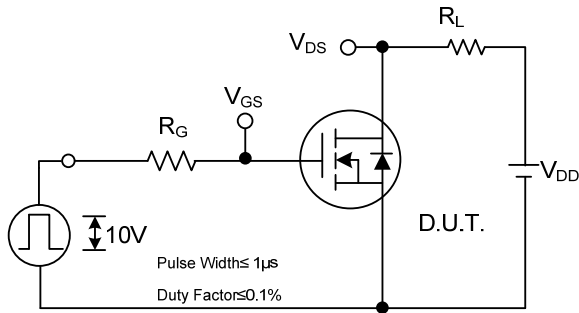


Peak Diode Recovery dv/dt Test Circuit

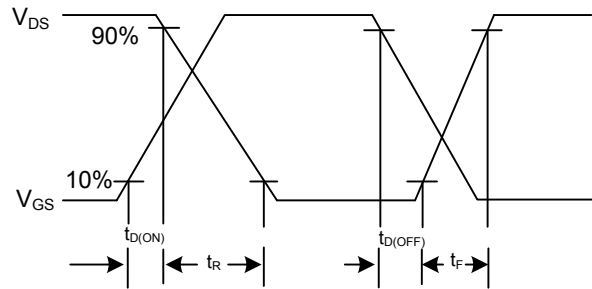


Peak Diode Recovery dv/dt Waveforms

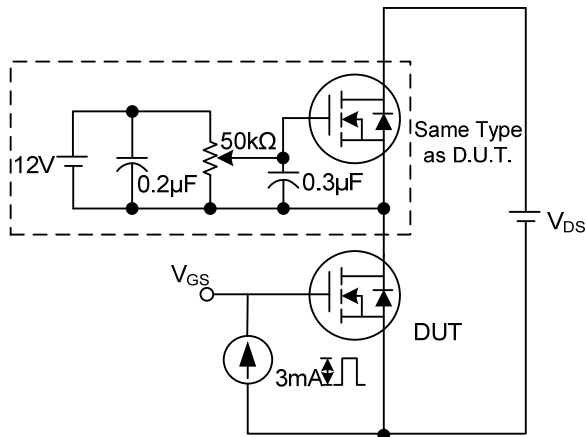
■ TEST CIRCUITS AND WAVEFORMS (Cont.)



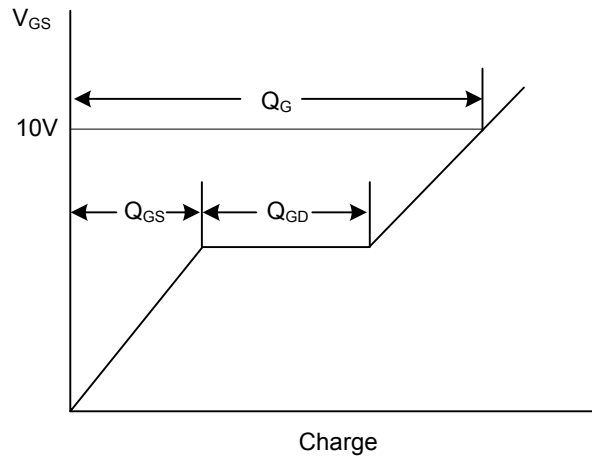
Switching Test Circuit



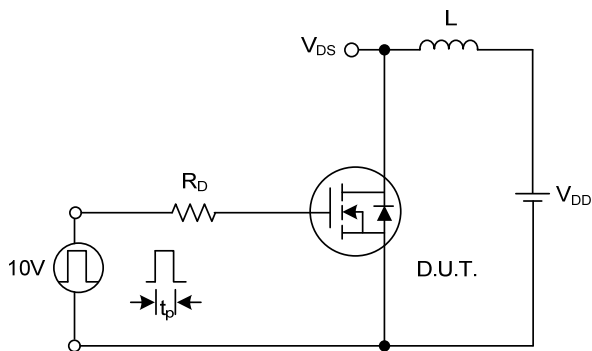
Switching Waveforms



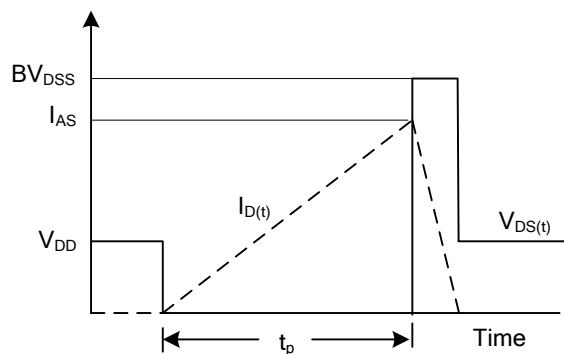
Gate Charge Test Circuit



Gate Charge Waveform



Unclamped Inductive Switching Test Circuit



Unclamped Inductive Switching Waveforms

UTC assumes no responsibility for equipment failures that result from using products at values that exceed, even momentarily, rated values (such as maximum ratings, operating condition ranges, or other parameters) listed in products specifications of any and all UTC products described or contained herein. UTC products are not designed for use in life support appliances, devices or systems where malfunction of these products can be reasonably expected to result in personal injury. Reproduction in whole or in part is prohibited without the prior written consent of the copyright owner. The information presented in this document does not form part of any quotation or contract, is believed to be accurate and reliable and may be changed without notice.